



# 352 Straight Boom Hydraulic Excavator

## Technical Specifications

Configurations and features may vary by region. Please consult your Cat® dealer for availability in your area.

### Table of Contents

<b>Specifications</b> .....	<b>2</b>
Engine .....	2
Swing Mechanism .....	2
Weights .....	2
Track .....	2
Drive .....	2
Hydraulic System .....	2
Service Refill Capacities .....	3
Standards .....	3
Sound Performance .....	3
Air Conditioning System .....	3
Operating Weights and Ground Pressures .....	4
Major Component Weights .....	5
Dimensions .....	6
Working Ranges and Forces .....	9
Straight Boom Lift Capacities:	
Fixed Gauge Undercarriage .....	10
Variable Gauge Undercarriage .....	16
Bucket Specifications and Compatibility:	
Europe .....	22
North America .....	23
Attachments Offering Guide:	
Europe .....	25
North America .....	27
<b>Standard and Optional Equipment</b> .....	<b>29</b>
<b>Dealer Installed Kits and Attachments</b> .....	<b>31</b>
<b>352 Straight Boom Environmental Declaration</b> .....	<b>32</b>

# 352 Straight Boom Hydraulic Excavator Specifications

## Engine

Engine Model	Cat® C13B	
Net Power		
ISO 9249	330 kW	443 hp
ISO 9249 (DIN)	449 hp (metric)	
Engine Power		
ISO 14396	332 kW	445 hp
ISO 14396 (DIN)	451 hp (metric)	
Bore	130 mm	5 in
Stroke	157 mm	6 in
Displacement	12.5 L	763 in <sup>3</sup>
Biodiesel capability	Up to B20 <sup>(1)</sup>	

- Meets U.S. EPA Tier 4 Final and EU Stage V emission standards.
- Cold Weather Start at -18 Degrees is Standard.
- Recommended for use up to 4500 m (14,760 ft) altitude with engine power derate above 2600 m (8,530 ft).
- Advertised power is tested per the specified standard in effect at the time of manufacture.
- Net power advertised is the power available at the flywheel when the engine is equipped with fan, air intake system, exhaust system and alternator.
- Engine speed at 1700 rpm

<sup>(1)</sup>Cat® diesel engines are required to use ULSD (ultra-low sulfur diesel fuel with 15 ppm of sulfur or less) or ULSD blended with the following lower-carbon intensity fuels\*\* up to:

- ✓ 20% biodiesel FAME (fatty acid methyl ester)\*
- ✓ 100% renewable diesel, HVO (hydrogenated vegetable oil) and GTL (gas-to-liquid) fuels

Refer to guidelines for successful application. Please consult your Cat dealer or “Caterpillar Machine Fluids Recommendations” (SEBU6250) for details.

*\*Engines with no aftertreatment devices can use higher blends, up to 100% biodiesel (for use of blends higher than 20% biodiesel, consult your Cat dealer).*

*\*\*Tailpipe greenhouse gas emissions from lower-carbon intensity fuels are essentially the same as traditional fuels.*

## Swing Mechanism

Swing Speed*	6.50 rpm	
Maximum Swing Torque	189 kN·m	139,400 lbf·ft

\* For CE-marked machine default value may be set lower.

## Weights

Operating Weight	52 100 kg	114,900 lb
• Fixed Gauge undercarriage, Straight boom, Reach 3.35 m TB (11'0") stick, Heavy Duty (HD) 2.14 m <sup>3</sup> (2.8 yd <sup>3</sup> ) bucket, 600 mm (24") triple grouser shoes and 12.0 mt (26,460 lb) counterweight.		
Operating Weight	54 700 kg	120,600 lb
• Variable Gauge undercarriage, Straight boom, Reach 3.35 m TB (11'0") stick, HD 2.14 m <sup>3</sup> (2.8 yd <sup>3</sup> ) bucket, 600 mm (24") triple grouser shoes and 11.35 mt (25,020 lb) removable counterweight.		
Operating Weight	54 900 kg	121,000 lb
• Variable Gauge undercarriage, Straight boom, Reach 3.9 m TB (12'10") stick, HD 2.14 m <sup>3</sup> (2.8 yd <sup>3</sup> ) bucket, 600 mm (24") triple grouser shoes and 11.35 mt (25,020 lb) removable counterweight.		

## Track

Optional Track Shoes Width	600 mm	24 in
Optional Track Shoes Width	750 mm	30 in
Optional Track Shoes Width	900 mm	35 in
Number of Shoes (each side)	52	
Number of Track Rollers (each side)	9	
Number of Carrier Rollers (each side)	2 (Fixed Gauge Undercarriage), 3 (Variable Gauge Undercarriage)	

## Drive

Maximum Gradeability	35°/70%	
Maximum Travel Speed	4.5 km/h	2.8 mph
Maximum Drawbar Pull	348 kN	78,233 lbf

## Hydraulic System

Main System – Maximum Flow (Implement)	779 L/min (389 × 2 pumps)	206 gal/min (103 × 2 pumps)
Maximum Pressure – Equipment – Implement	35 000 kPa	5,076 psi
Maximum Pressure – Equipment – Lift Mode	38 000 kPa	5,511 psi
Maximum Pressure – Travel	35 000 kPa	5,076 psi
Maximum Pressure – Swing	26 000 kPa	3,771 psi
Boom Cylinder – Bore	170 mm	7 in
Boom Cylinder – Stroke	1490 mm	59 in
Stick Cylinder – Bore	190 mm	7 in
Stick Cylinder – Stroke	1729 mm	68 in
Bucket Cylinder – Bore	160 mm	6 in
Bucket Cylinder – Stroke	1356 mm	53 in

# 352 Straight Boom Hydraulic Excavator Specifications

## Service Refill Capacities

Fuel Tank Capacity	715 L	188.9 gal
Cooling System	52 L	13.7 gal
Engine Oil (with filter)	40 L	10.6 gal
Swing Drive	11 L	2.9 gal
Final Drive (each)	10 L	2.6 gal
Hydraulic System (including tank)	550 L	145.3 gal
Hydraulic Tank (including suction pipe)	217 L	57.3 gal
Diesel Exhaust Fluid (DEF) Tank	80 L	21.1 gal

## Standards

Brakes	ISO 10265:2008
Cab/Operator Protective Guards (OPG)	ISO 10262:1998 Level II

## Sound Performance

ISO 6395:2008 (external)	108 dB(A)
ISO 6396:2008 (inside cab)	73 dB(A)

- Hearing protection may be needed when operating with an open operator station and cab (when not properly maintained or doors/windows open) for extended periods or in a noisy environment.

## Air Conditioning System

The air conditioning system on this machine contains the fluorinated greenhouse gas refrigerant R134a (Global Warming Potential = 1430). The system contains 1.00 kg (2.2 lb) of refrigerant which has a CO<sub>2</sub> equivalent of 1.430 metric tonnes (1.576 tons).

# 352 Straight Boom Hydraulic Excavator Specifications

## Operating Weights and Ground Pressures

	600 mm (24") Triple Grouser Shoes		750 mm (30") Triple Grouser Shoes		900 mm (35") Triple Grouser Shoes	
	Weight kg (lb)	Ground Pressure kPa (psi)	Weight kg (lb)	Ground Pressure kPa (psi)	Weight kg (lb)	Ground Pressure kPa (psi)
<b>Base Machine Configurations</b>						
<b>Base machine with Single Flange Track Rollers and Fixed Gauge Undercarriage</b>						
<b>12.0 mt (26,460 lb) Counterweight</b>						
Straight Boom + R3.35 TB (11'0") Stick + 2.14 m <sup>3</sup> (2.80 yd <sup>3</sup> ) HD Bucket	52 100 (114,900)	90.5 (13.1)	52 900 (116,600)	91.8 (13.3)	53 600 (118,200)	93.1 (13.5)
Straight Boom + R3.9 TB (12'10") Stick + 2.14 m <sup>3</sup> (2.80 yd <sup>3</sup> ) HD Bucket	52 300 (115,300)	90.7 (13.2)	53 100 (117,100)	92.0 (13.4)	53 800 (118,600)	93.3 (13.5)
<b>Base machine with Single Flange Track Rollers and Variable Gauge Undercarriage</b>						
<b>12.0 mt (26,460 lb) Counterweight</b>						
Straight Boom + R3.35 TB (11'0") Stick + 2.14 m <sup>3</sup> (2.80 yd <sup>3</sup> ) HD Bucket	54 600 (120,500)	95.1 (13.8)	55 400 (122,100)	96.5 (14.0)	56 100 (123,800)	97.8 (14.2)
Straight Boom + R3.9 TB (12'10") Stick + 2.14 m <sup>3</sup> (2.80 yd <sup>3</sup> ) HD Bucket	54 800 (120,800)	95.4 (13.8)	55 600 (120,500)	96.7 (14.0)	56 300 (124,100)	98.0 (14.2)
<b>Base machine with Double Flange Track Rollers and Variable Gauge Undercarriage</b>						
<b>12.0 mt (26,460 lb) Counterweight</b>						
Straight Boom + R3.35 TB (11'0") Stick + 2.14 m <sup>3</sup> (2.80 yd <sup>3</sup> ) HD Bucket	54 700 (120,500)	95.2 (13.8)	55 400 (122,200)	96.5 (14.0)	56 200 (123,900)	97.8 (14.2)
Straight Boom + R3.9 TB (12'10") Stick + 2.14 m <sup>3</sup> (2.80 yd <sup>3</sup> ) HD Bucket	54 800 (120,900)	95.5 (13.9)	55 600 (120,500)	96.8 (14.0)	56 300 (124,200)	98.1 (14.2)
<b>Base machine with Single Flange Track Rollers and Fixed Gauge Undercarriage</b>						
<b>11.35 mt (25,020 lb) Removable Counterweight</b>						
Straight Boom + R3.35 TB (11'0") Stick + 2.14 m <sup>3</sup> (2.80 yd <sup>3</sup> ) HD Bucket	52 200 (115,100)	90.6 (13.1)	53 000 (116,800)	91.9 (13.3)	53 700 (118,400)	93.2 (13.5)
Straight Boom + R3.9 TB (12'10") Stick + 2.14 m <sup>3</sup> (2.80 yd <sup>3</sup> ) HD Bucket	52 400 (115,500)	90.9 (13.2)	53 100 (117,100)	92.2 (13.4)	53 900 (118,800)	93.5 (13.6)
<b>Base machine with Single Flange Track Rollers and Variable Gauge Undercarriage</b>						
<b>11.35 mt (25,020 lb) Removable Counterweight</b>						
Straight Boom + R3.35 TB (11'0") Stick + 2.14 m <sup>3</sup> (2.80 yd <sup>3</sup> ) HD Bucket	54 700 (120,600)	95.3 (13.8)	55 500 (122,300)	96.6 (14.0)	56 200 (123,900)	97.9 (14.2)
Straight Boom + R3.9 TB (12'10") Stick + 2.14 m <sup>3</sup> (2.80 yd <sup>3</sup> ) HD Bucket	54 900 (121,000)	95.5 (13.9)	55 600 (120,500)	96.9 (14.0)	56 400 (124,300)	98.2 (14.2)
<b>Base machine with Double Flange Track Rollers and Variable Gauge Undercarriage</b>						
<b>11.35 mt (25,020 lb) Removable Counterweight</b>						
Straight Boom + R3.35 TB (11'0") Stick + 2.14 m <sup>3</sup> (2.80 yd <sup>3</sup> ) HD Bucket	54 700 (120,600)	95.3 (13.8)	55 500 (122,300)	96.6 (14.0)	56 200 (124,000)	97.9 (14.2)
Straight Boom + R3.9 TB (12'10") Stick + 2.14 m <sup>3</sup> (2.80 yd <sup>3</sup> ) HD Bucket	54 900 (121,000)	95.6 (13.9)	55 700 (122,700)	96.9 (14.1)	56 400 (124,400)	98.2 (14.2)

All operating weights include a 90% fuel tank with 75 kg (165 lb) operator.

# 352 Straight Boom Hydraulic Excavator Specifications

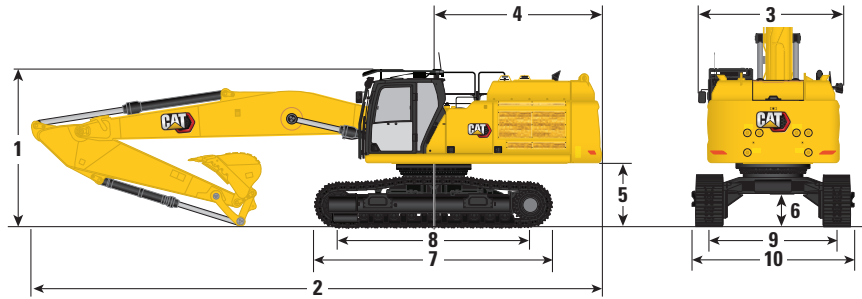
## Major Component Weights

	kg	lb
Base Machine (with counterweight, upper frame for removable counterweight, and two boom cylinders – does not include boom, stick, bucket, stick cylinder, bucket cylinder, tracks, 90% fuel tank and 75 kg [165 lb] operator).		
With 11.35 mt (25,020 lb) counterweight and fixed gauge undercarriage with single flange track rollers	35 860	79,050
With 11.35 mt (25,020 lb) counterweight and variable gauge undercarriage with single flange track rollers	38 350	84,550
With 11.35 mt (25,020 lb) counterweight and variable gauge undercarriage with double flange track rollers	38 390	84,630
Base Machine (with counterweight, upper frame, and two boom cylinders – does not include boom, stick, bucket, stick cylinder, bucket cylinder, tracks, 90% fuel tank and 75 kg [165 lb] operator).		
With 12.0 mt (26,460 lb) counterweight and fixed gauge undercarriage with single flange track rollers	35 790	78,900
With 12.0 mt (26,460 lb) counterweight and variable gauge undercarriage with single flange track rollers	38 280	84,400
With 12.0 mt (26,460 lb) counterweight and variable gauge undercarriage with double flange track rollers	38 320	84,480
Track Shoes:		
600 mm (24") Triple Grouser Track Shoes	5290	11,660
750 mm (30") Triple Grouser Track Shoes	6040	13,320
900 mm (35") Triple Grouser Track Shoes	6790	14,970
Two Boom Cylinders	960	2,130
Weight of 90% Fuel Tank and 75 kg (165 lb) Operator	630	1,380
Counterweights:		
11.35 mt (25,020 lb) Removable Counterweight	11 350	25,020
12.0 mt (26,460 lb) Counterweight	12 000	26,460
Swing Frame:		
Standard Swing Frame	4320	9,530
Removable Counterweight Swing Frame	4350	9,590
Undercarriages:		
Base Frame with Single Flange Track Rollers and Carrier Rollers for Fixed Gauge Undercarriage	10 740	23,670
Base Frame with Single Flange Track Rollers and Carrier Rollers for Variable Gauge Undercarriage	13 230	29,170
Base Frame with Double Flange Track Rollers and Carrier Rollers for Variable Gauge Undercarriage	13 270	29,250
Booms (including lines, pins, stick cylinder):		
Straight Boom 7.8 m (25'6")	5290	11,660
Sticks (including lines, pins, bucket cylinder, bucket linkage):		
Reach Stick R3.35 TB (11'0")	2870	6,330
Reach Stick R3.9 TB (12'10")	3030	6,690
Bucket (without linkage, with tips and side cutters):		
2.14 m <sup>3</sup> (2.80 yd <sup>3</sup> ) HD for TB	2280	5,030
Quick Couplers (QC):		
CW Dedicated QC	770	1,690
Pin Grabber QC	1060	2,340

# 352 Straight Boom Hydraulic Excavator Specifications

## Dimensions

All dimensions are approximate and may vary depending on bucket selection.



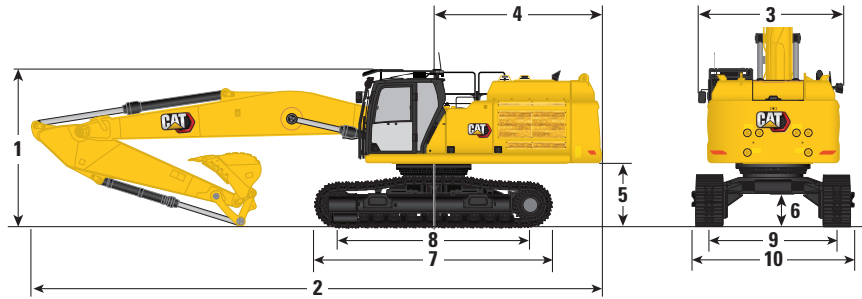
Boom Option	Straight Boom 7.8 m (25'6")							
Stick Options	Reach Stick							
	R3.35TB (11'0")		R3.9TB (12'10")		R3.35TB (11'0")		R3.9TB (12'10")	
Undercarriage Option	Fixed Gauge				Variable Gauge			
<b>1 Machine Height:</b>								
Top of Cab Height	3230 mm	(10'7")	3230 mm	(10'7")	3380 mm	(11'1")	3380 mm	(11'1")
Top of OPG Height	3440 mm	(11'3")	3440 mm	(11'3")	3590 mm	(11'9")	3590 mm	(11'9")
Shipping Height with Operator Protective Guards (highest point between boom and cab)	3440 mm	(11'3")	3490 mm	(11'5")	3590 mm	(11'9")	3590 mm	(11'9")
Shipping Height without OPG	3330 mm	(10'11")	3490 mm	(11'5")	3390 mm	(11'1")	3530 mm	(11'7")
Handrail Height	3370 mm	(11'1")	3370 mm	(11'1")	3530 mm	(11'7")	3530 mm	(11'7")
With Boom/Stick/Bucket Installed	3560 mm	(11'8")	3720 mm	(12'2")	3590 mm	(11'9")	3750 mm	(12'4")
With Boom/Stick Installed	3330 mm	(10'11")	3490 mm	(11'5")	3390 mm	(11'1")	3530 mm	(11'7")
With Boom Installed	2590 mm	(8'6")	2590 mm	(8'6")	2740 mm	(9'0")	2740 mm	(9'0")
With Boom/Stick/Bucket Installed (with/without auxiliary lines)	3560 mm	(11'8")	3720 mm	(12'2")	3590 mm	(11'9")	3750 mm	(12'4")
With Boom/Stick Installed (with/without auxiliary lines)	3330 mm	(10'11")	3490 mm	(11'5")	3390 mm	(11'1")	3530 mm	(11'7")
With Boom Installed (with/without auxiliary lines)	2590 mm	(8'6")	2590 mm	(8'6")	2740 mm	(9'0")	2740 mm	(9'0")
<b>2 Machine Length:</b>								
With Boom/Stick/Bucket Installed (with/without auxiliary lines)	12 810 mm	(42'0")	12 800 mm	(42'0")	12 830 mm	(42'1")	12 830 mm	(42'1")
With Boom/Stick Installed (with/without auxiliary lines)	12 840 mm	(42'2")	12 860 mm	(42'2")	12 850 mm	(42'2")	12 870 mm	(42'3")
With Boom Installed (with/without auxiliary lines, without fixed counterweight)	11 380 mm	(37'4")	11 380 mm	(37'4")	11 340 mm	(37'2")	11 340 mm	(37'2")
With Boom/Stick/Bucket Installed (with removable counterweight)	12 890 mm	(42'3")	12 880 mm	(42'3")	12 910 mm	(42'4")	12 910 mm	(42'4")
With Boom/Stick Installed (with removable counterweight)	12 920 mm	(42'5")	12 940 mm	(42'5")	12 930 mm	(42'5")	12 950 mm	(42'6")
With Boom Installed (without removable counterweight)	11 390 mm	(37'4")	11 390 mm	(37'4")	11 350 mm	(37'3")	11 350 mm	(37'3")
<b>3 Upperframe Width without Walkways</b>	3020 mm	(9'11")	3020 mm	(9'11")	3020 mm	(9'11")	3020 mm	(9'11")
Bucket Type	HD		HD		HD		HD	
Bucket Capacity	2.14 m <sup>3</sup>	(2.80 yd <sup>3</sup> )	2.14 m <sup>3</sup>	(2.80 yd <sup>3</sup> )	2.14 m <sup>3</sup>	(2.80 yd <sup>3</sup> )	2.14 m <sup>3</sup>	(2.80 yd <sup>3</sup> )
Bucket Tip Radius	1882 mm	(6'2")	1882 mm	(6'2")	1882 mm	(6'2")	1882 mm	(6'2")

(continued on next page)

# 352 Straight Boom Hydraulic Excavator Specifications

## Dimensions *(continued)*

All dimensions are approximate and may vary depending on bucket selection.



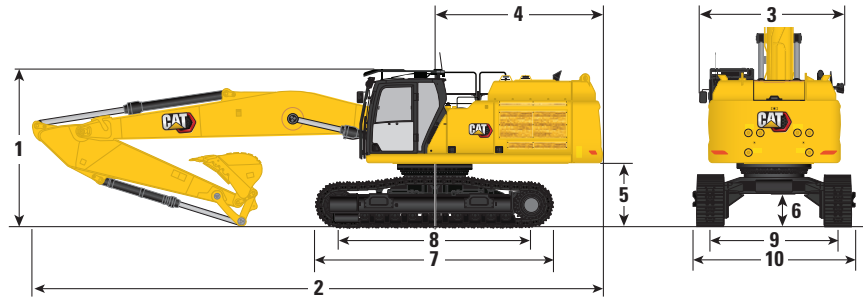
Boom Option	Straight Boom 7.8 m (25'6")							
Stick Options	Reach Stick							
	R3.35TB (11'0")				R3.9TB (12'10")			
Undercarriage Option	Fixed Gauge				Variable Gauge			
<b>4</b> Tail Swing Radius								
(without fixed counterweight)	3760 mm	(12'4")	3760 mm	(12'4")	3760 mm	(12'4")	3760 mm	(12'4")
(with removable counterweight)	3840 mm	(12'7")	3840 mm	(12'7")	3840 mm	(12'7")	3840 mm	(12'7")
<b>5</b> Counterweight Clearance (without shoe lug)	1280 mm	(4'2")	1280 mm	(4'2")	1435 mm	(4'8")	1435 mm	(4'8")
<b>6</b> Ground Clearance (without shoe lug)	475 mm	(1'7")	475 mm	(1'7")	710 mm	(2'4")	710 mm	(2'4")
<b>7</b> Track Length	5370 mm	(17'7")	5370 mm	(17'7")	5350 mm	(17'7")	5350 mm	(17'7")
<b>8</b> Track Length – Length to Center of Rollers	4360 mm	(14'4")	4360 mm	(14'4")	4340 mm	(14'3")	4340 mm	(14'3")
<b>9</b> Track Gauge								
Retracted (Variable Gauge) – 600 mm (24") and 750 mm (30") Triple Grouser Shoes	—	—	—	—	2390 mm	(7'10")	2390 mm	(7'10")
Retracted (Variable Gauge) – 900 mm (35") Triple Grouser Shoes	—	—	—	—	2640 mm	(8'8")	2640 mm	(8'8")
Extended (Variable Gauge) with Triple Grouser Shoes	—	—	—	—	2890 mm	(9'6")	2890 mm	(9'6")
Fixed Gauge with Triple Grouser Shoes	2740 mm	(9'0")	2740 mm	(9'0")	—	—	—	—
Bucket Type	HD		HD		HD		HD	
Bucket Capacity	2.14 m <sup>3</sup>	(2.80 yd <sup>3</sup> )	2.14 m <sup>3</sup>	(2.80 yd <sup>3</sup> )	2.14 m <sup>3</sup>	(2.80 yd <sup>3</sup> )	2.14 m <sup>3</sup>	(2.80 yd <sup>3</sup> )
Bucket Tip Radius	1882 mm	(6'2")	1882 mm	(6'2")	1882 mm	(6'2")	1882 mm	(6'2")

(continued on next page)

# 352 Straight Boom Hydraulic Excavator Specifications

## Dimensions (continued)

All dimensions are approximate and may vary depending on bucket selection.



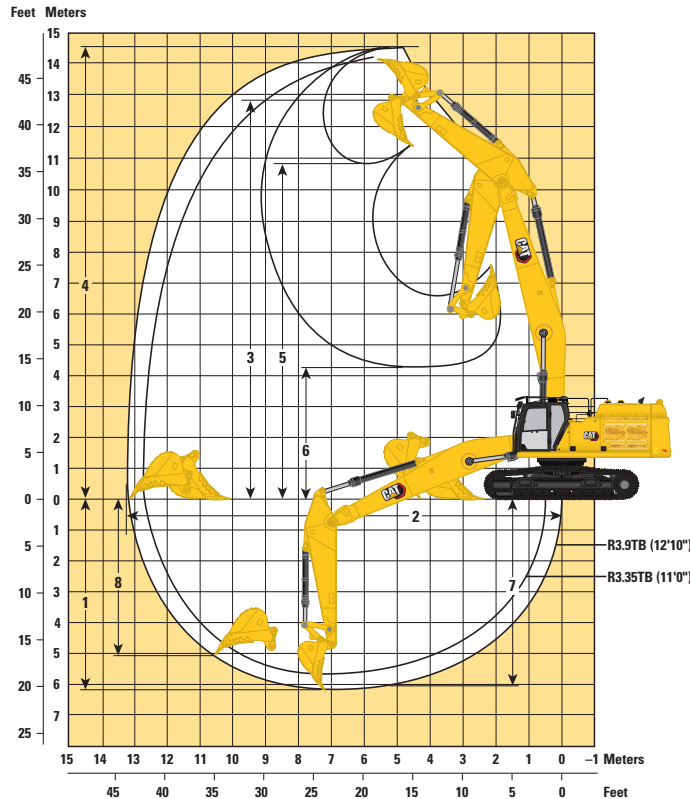
Boom Option	Straight Boom 7.8 m (25'6")							
Stick Options	Reach Stick							
	R3.35TB (11'0")				R3.9TB (12'10")			
Undercarriage Option	Fixed Gauge				Variable Gauge			
<b>10</b> Undercarriage Width – Variable Gauge								
Retracted (without steps):								
600 mm (24") Shoes	—	—	—	—	2990 mm (9'10")	2990 mm (9'10")	2990 mm (9'10")	2990 mm (9'10")
750 mm (30") Shoes	—	—	—	—	3140 mm (10'4")	3140 mm (10'4")	3140 mm (10'4")	3140 mm (10'4")
900 mm (35") Shoes	—	—	—	—	3540 mm (11'7")	3540 mm (11'7")	3540 mm (11'7")	3540 mm (11'7")
Undercarriage Width – Retracted (with steps):								
600 mm (24") Shoes	—	—	—	—	3180 mm (10'5")	3180 mm (10'5")	3180 mm (10'5")	3180 mm (10'5")
750 mm (30") Shoes	—	—	—	—	3180 mm (10'5")	3180 mm (10'5")	3180 mm (10'5")	3180 mm (10'5")
900 mm (35") Shoes	—	—	—	—	3540 mm (11'7")	3540 mm (11'7")	3540 mm (11'7")	3540 mm (11'7")
Undercarriage Width – Extended (without steps):								
600 mm (24") Shoes	—	—	—	—	3490 mm (11'5")	3490 mm (11'5")	3490 mm (11'5")	3490 mm (11'5")
750 mm (30") Shoes	—	—	—	—	3640 mm (11'11")	3640 mm (11'11")	3640 mm (11'11")	3640 mm (11'11")
900 mm (35") Shoes	—	—	—	—	3790 mm (12'5")	3790 mm (12'5")	3790 mm (12'5")	3790 mm (12'5")
Undercarriage Width – Extended (with steps):								
600 mm (24") Shoes	—	—	—	—	3680 mm (12'1")	3680 mm (12'1")	3680 mm (12'1")	3680 mm (12'1")
750 mm (30") Shoes	—	—	—	—	3680 mm (12'1")	3680 mm (12'1")	3680 mm (12'1")	3680 mm (12'1")
900 mm (35") Shoes	—	—	—	—	3790 mm (12'5")	3790 mm (12'5")	3790 mm (12'5")	3790 mm (12'5")
Undercarriage Width – Fixed Gauge (without steps)								
600 mm (24") Shoes	3340 mm (10'11")	3340 mm (10'11")	—	—	—	—	—	—
750 mm (30") Shoes	3490 mm (11'5")	3490 mm (11'5")	—	—	—	—	—	—
900 mm (35") Shoes	3640 mm (11'11")	3640 mm (11'11")	—	—	—	—	—	—
Undercarriage Width – Fixed Gauge (with steps):								
600 mm (24") Shoes	3530 mm (11'7")	3530 mm (11'7")	—	—	—	—	—	—
750 mm (30") Shoes	3530 mm (11'7")	3530 mm (11'7")	—	—	—	—	—	—
900 mm (35") Shoes	3640 mm (11'11")	3640 mm (11'11")	—	—	—	—	—	—
Bucket Type	HD		HD		HD		HD	
Bucket Capacity	2.14 m <sup>3</sup> (2.80 yd <sup>3</sup> )	2.14 m <sup>3</sup> (2.80 yd <sup>3</sup> )	2.14 m <sup>3</sup> (2.80 yd <sup>3</sup> )	2.14 m <sup>3</sup> (2.80 yd <sup>3</sup> )	2.14 m <sup>3</sup> (2.80 yd <sup>3</sup> )	2.14 m <sup>3</sup> (2.80 yd <sup>3</sup> )	2.14 m <sup>3</sup> (2.80 yd <sup>3</sup> )	2.14 m <sup>3</sup> (2.80 yd <sup>3</sup> )
Bucket Tip Radius	1882 mm (6'2")	1882 mm (6'2")	1882 mm (6'2")	1882 mm (6'2")	1882 mm (6'2")	1882 mm (6'2")	1882 mm (6'2")	1882 mm (6'2")



# 352 Straight Boom Hydraulic Excavator Specifications

## Working Ranges and Forces

All dimensions are approximate and may vary depending on bucket selection.

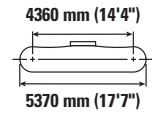
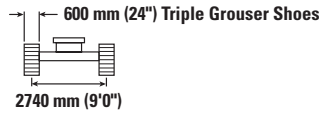
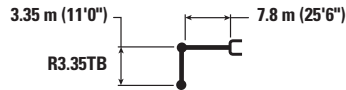


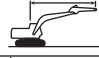









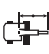
Boom Option	Straight Boom 7.8 m (25'6")							
Stick Options	Reach Stick							
	R3.35TB (11'0")		R3.9TB (12'10")		R3.35TB (11'0")		R3.9TB (12'10")	
Undercarriage Options	Fixed Gauge				Variable Gauge			
1 Maximum Digging Depth	5620 mm	(18'5")	6170 mm	(20'3")	5460 mm	(17'11")	6010 mm	(19'9")
2 Maximum Reach at Ground Line	12 810 mm	(42'0")	13 270 mm	(43'6")	12 780 mm	(41'11")	13 240 mm	(43'5")
3 Maximum Stick Pin Height	12 410 mm	(40'9")	12 700 mm	(41'8")	12 560 mm	(41'2")	12 850 mm	(42'2")
4 Maximum Cutting Height	14 240 mm	(46'9")	14 500 mm	(47'7")	14 400 mm	(47'3")	14 650 mm	(48'1")
5 Maximum Loading Height	10 530 mm	(34'7")	10 820 mm	(35'6")	10 680 mm	(35'0")	10 970 mm	(36'0")
6 Minimum Loading Height	4750 mm	(15'7")	4240 mm	(13'11")	4900 mm	(16'1")	4390 mm	(14'5")
7 Maximum Depth Cut for 2440 mm (8'0") Level Bottom	5460 mm	(17'11")	6010 mm	(19'9")	5300 mm	(17'5")	5850 mm	(19'2")
8 Maximum Vertical Wall Digging Depth	4550 mm	(14'11")	5040 mm	(16'6")	4400 mm	(14'5")	4890 mm	(16'1")
Bucket Digging Force (ISO)	268 kN	(60,250 lbf)	268 kN	(60,250 lbf)	268 kN	(60,250 lbf)	268 kN	(60,250 lbf)
Stick Digging Force (ISO)	201 kN	(45,190 lbf)	184 kN	(41,360 lbf)	201 kN	(45,190 lbf)	184 kN	(41,360 lbf)
Bucket Type	HD		HD		HD		HD	
Bucket Capacity	2.14 m <sup>3</sup>	(2.80 yd <sup>3</sup> )	2.14 m <sup>3</sup>	(2.80 yd <sup>3</sup> )	2.14 m <sup>3</sup>	(2.80 yd <sup>3</sup> )	2.14 m <sup>3</sup>	(2.80 yd <sup>3</sup> )
Bucket Tip Radius	1881 mm	(6'2")	1881 mm	(6'2")	1881 mm	(6'2")	1881 mm	(6'2")

# 352 Straight Boom Hydraulic Excavator Specifications

## Straight Boom Lift Capacities – Counterweight: 12.0 mt (26,460 lb) – without Bucket, Heavy Lift: On

Fixed Gauge Undercarriage



		4500 mm/15'0"		6000 mm/20'0"		7500 mm/25'0"		9000 mm/30'0"		10 500 mm/35'0"				mm ft/in
														
12 000 mm 40'0"	kg lb	*15 600	*15 600									*13 800 *31,950	*13 800 *31,950	4970 14'10"
10 500 mm 35'0"	kg lb			*14 500 *31,650	*14 500 *31,650							*10 950 *24,600	*10 950 *24,600	7260 23'1"
9000 mm 30'0"	kg lb			*14 100 *31,200	*14 100 *31,200	*14 050 *30,350	12 550 26,900					*9850 *21,800	9650 21,700	8720 28'2"
7500 mm 25'0"	kg lb	*13 250 *29,100	*13 250 *29,100	*14 700 *32,150	*14 700 *32,150	*14 400 *31,250	12 350 26,600	*12 700 *27,700	9200 19,700			*9300 *20,500	8000 17,800	9730 31'8"
6000 mm 20'0"	kg lb	*23 550 *47,700	*23 550 *47,700	*18 100 *39,100	16 800 36,300	*14 950 *32,400	12 000 25,800	*12 850 *27,950	9050 19,400			*9050 *19,950	7050 15,650	10 420 34'0"
4500 mm 15'0"	kg lb			*19 550 *42,250	15 800 34,100	*15 650 *33,850	11 450 24,750	*13 150 *28,500	8750 18,850	10 800 23,150	6900 14,750	*9050 *19,950	6500 14,350	10 860 35'6"
3000 mm 10'0"	kg lb			*20 550 *44,500	14 800 32,000	*16 150 *34,950	10 950 23,600	*13 300 *28,800	8450 18,250	10 650 22,900	6750 14,500	*9250 *20,350	6200 13,700	11 080 36'3"
1500 mm 5'0"	kg lb			*20 400 *44,300	14 200 30,600	*16 150 *34,950	10 550 22,700	13 100 28,250	8200 17,700	10 500 22,600	6650 14,250	*9650 *21,300	6150 13,500	11 090 36'4"
0 mm 0'0"	kg lb			*19 050 *41,400	13 900 29,950	*15 450 *33,450	10 300 22,150	*12 550 *27,100	8050 17,350	*9950 *21,100	6550 14,150	*9050 *19,900	6250 13,800	10 890 35'8"
-1500 mm -5'0"	kg lb	*13 150 *30,500	*13 150 *30,500	*16 700 *36,350	13 900 29,900	*13 900 *30,100	10 200 22,000	*11 250 *24,100	8000 17,250			*8150 *17,850	6600 14,600	10 470 34'3"
-3000 mm -10'0"	kg lb			*13 500 *29,200	*13 500 *29,200	*11 450 *24,550	10 250 22,150	*8850 *18,600	8100 17,500			*7450 *16,550	*7450 *16,550	9600 31'3"



ISO 10567:2007



\* Indicates that the load is limited by hydraulic lifting capacity rather than tipping load. The above loads are in compliance with hydraulic excavator lift capacity standard ISO 10567:2007. They do not exceed 87% of hydraulic lifting capacity or 75% of tipping load. Weight of all lifting accessories must be deducted from the above lifting capacities. Lifting capacities are based on the machine standing on a firm, uniform supporting surface. The use of a work tool attachment point to handle/lift objects, could affect the machine lift performance.

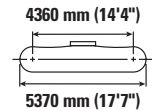
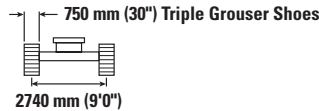
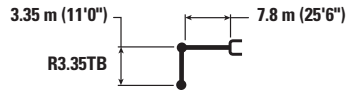
Lift capacity stays with ±5% for all available track shoes.

Always refer to the appropriate Operation and Maintenance Manual for specific product information.

# 352 Straight Boom Hydraulic Excavator Specifications

## Straight Boom Lift Capacities – Counterweight: 12.0 mt (26,460 lb) – without Bucket, Heavy Lift: On

Fixed Gauge Undercarriage



		4500 mm/15'0"		6000 mm/20'0"		7500 mm/25'0"		9000 mm/30'0"		10 500 mm/35'0"		mm ft/in		
12 000 mm 40'0"	kg lb	*15 600	*15 600									*13 800 *31,950	*13 800 *31,950	4970 14'10"
10 500 mm 35'0"	kg lb			*14 500 *31,650	*14 500 *31,650							*10 950 *24,600	*10 950 *24,600	7260 23'1"
9000 mm 30'0"	kg lb			*14 100 *31,200	*14 100 *31,200	*14 050 *30,350	12 700 27,200					*9850 *21,800	*9750 *21,800	8720 28'2"
7500 mm 25'0"	kg lb	*13 250 *29,100	*13 250 *29,100	*14 700 *32,150	*14 700 *32,150	*14 400 *31,250	12 500 26,900	*12 700 *27,700	9300 19,950			*9300 *20,500	8100 18,050	9730 31'8"
6000 mm 20'0"	kg lb	*23 550 *47,700	*23 550 *47,700	*18 100 *39,100	17 000 36,650	*14 950 *32,400	12 100 26,100	*12 850 *27,950	9150 19,650			*9050 *19,950	7150 15,850	10 420 34'0"
4500 mm 15'0"	kg lb			*19 550 *42,250	16 000 34,500	*15 650 *33,850	11 600 25,000	*13 150 *28,500	8850 19,100	10 950 23,500	7000 14,950	*9050 *19,950	6600 14,550	10 860 35'6"
3000 mm 10'0"	kg lb			*20 550 *44,500	15 000 32,400	*16 150 *34,950	11 100 23,900	*13 300 *28,800	8600 18,500	10 800 23,200	6850 14,700	*9250 *20,350	6300 13,900	11 080 36'3"
1500 mm 5'0"	kg lb			*20 400 *44,300	14 350 31,000	*16 150 *34,950	10 650 23,000	*13 150 *28,500	8350 17,950	10 650 22,950	6700 14,450	*9650 *21,300	6200 13,700	11 090 36'4"
0 mm 0'0"	kg lb			*19 050 *41,400	14 100 30,350	*15 450 *33,450	10 400 22,450	*12 550 *27,100	8150 17,600	*9950 *21,100	6650 14,350	*9050 *19,900	6350 13,950	10 890 35'8"
-1500 mm -5'0"	kg lb	*13 150 *30,500	*13 150 *30,500	*16 700 *36,350	14 050 30,300	*13 900 *30,100	10 350 22,250	*11 250 *24,100	8100 17,500			*8150 *17,850	6700 14,800	10 470 34'3"
-3000 mm -10'0"	kg lb			*13 500 *29,200	*13 500 *29,200	*11 450 *24,550	10 400 22,450	*8850 *18,600	8200 17,700			*7450 *16,550	*7450 *16,550	9600 31'3"



ISO 10567:2007



\* Indicates that the load is limited by hydraulic lifting capacity rather than tipping load. The above loads are in compliance with hydraulic excavator lift capacity standard ISO 10567:2007. They do not exceed 87% of hydraulic lifting capacity or 75% of tipping load. Weight of all lifting accessories must be deducted from the above lifting capacities. Lifting capacities are based on the machine standing on a firm, uniform supporting surface. The use of a work tool attachment point to handle/lift objects, could affect the machine lift performance.

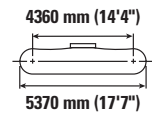
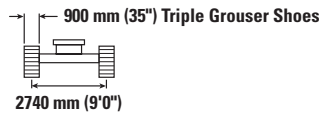
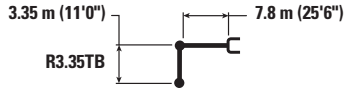
Lift capacity stays with ±5% for all available track shoes.











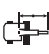

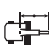
Always refer to the appropriate Operation and Maintenance Manual for specific product information.

# 352 Straight Boom Hydraulic Excavator Specifications

## Straight Boom Lift Capacities – Counterweight: 12.0 mt (26,460 lb) – without Bucket, Heavy Lift: On

Fixed Gauge Undercarriage



		4500 mm/15'0"		6000 mm/20'0"		7500 mm/25'0"		9000 mm/30'0"		10 500 mm/35'0"				mm ft/in
														
12 000 mm 40'0"	kg lb	*15 600	*15 600									*13 800 *31,950	*13 800 *31,950	4970 14'10"
10 500 mm 35'0"	kg lb			*14 500 *31,650	*14 500 *31,650							*10 950 *24,600	*10 950 *24,600	7260 23'1"
9000 mm 30'0"	kg lb			*14 100 *31,200	*14 100 *31,200	*14 050 *30,350	12 800 27,500					*9850 *21,800	*9850 *21,800	8720 28'2"
7500 mm 25'0"	kg lb	*13 250 *29,100	*13 250 *29,100	*14 700 *32,150	*14 700 *32,150	*14 400 *31,250	12 650 27,200	*12 700 *27,700	9400 20,150			*9300 *20,500	8200 18,250	9730 31'8"
6000 mm 20'0"	kg lb	*23 550 *47,700	*23 550 *47,700	*18 100 *39,100	17 200 37,050	*14 950 *32,400	12 250 26,400	*12 850 *27,950	9250 19,900			*9050 *19,950	7250 16,050	10 420 34'0"
4500 mm 15'0"	kg lb			*19 550 *42,250	16 150 34,900	*15 650 *33,850	11 750 25,300	*13 150 *28,500	9000 19,350	11 100 23,800	7050 15,150	*9050 *19,950	6700 14,750	10 860 35'6"
3000 mm 10'0"	kg lb			*20 550 *44,500	15 200 32,800	*16 150 *34,950	11 200 24,200	*13 300 *28,800	8700 18,700	10 950 23,500	6950 14,900	*9250 *20,350	6400 14,050	11 080 36'3"
1500 mm 5'0"	kg lb			*20 400 *44,300	14 550 31,400	*16 150 *34,950	10 800 23,300	*13 150 *28,500	8450 18,200	*10 800 *23,200	6800 14,650	*9650 *21,300	6300 13,900	11 090 36'4"
0 mm 0'0"	kg lb			*19 050 *41,400	14 250 30,750	*15 450 *33,450	10 550 22,750	*12 550 *27,100	8300 17,850	*9950 *21,100	6750 14,550	*9050 *19,900	6450 14,150	10 890 35'8"
-1500 mm -5'0"	kg lb	*13 150 *30,500	*13 150 *30,500	*16 700 *36,350	14 250 30,700	*13 900 *30,100	10 450 22,550	*11 250 *24,100	8200 17,750			*8150 *17,850	6800 15,000	10 470 34'3"
-3000 mm -10'0"	kg lb			*13 500 *29,200	*13 500 *29,200	*11 450 *24,550	10 550 22,750	*8850 *18,600	8300 17,950			*7450 *16,550	*7450 *16,550	9600 31'3"



ISO 10567:2007



\* Indicates that the load is limited by hydraulic lifting capacity rather than tipping load. The above loads are in compliance with hydraulic excavator lift capacity standard ISO 10567:2007. They do not exceed 87% of hydraulic lifting capacity or 75% of tipping load. Weight of all lifting accessories must be deducted from the above lifting capacities. Lifting capacities are based on the machine standing on a firm, uniform supporting surface. The use of a work tool attachment point to handle/lift objects, could affect the machine lift performance.

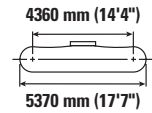
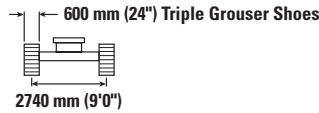
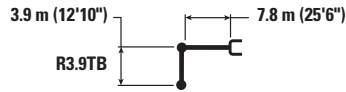
Lift capacity stays with ±5% for all available track shoes.

Always refer to the appropriate Operation and Maintenance Manual for specific product information.

# 352 Straight Boom Hydraulic Excavator Specifications

## Straight Boom Lift Capacities – Counterweight: 12.0 mt (26,460 lb) – without Bucket, Heavy Lift: On

Fixed Gauge Undercarriage



		4500 mm/15'0"		6000 mm/20'0"		7500 mm/25'0"		9000 mm/30'0"		10 500 mm/35'0"		mm ft/in		
12 000 mm 40'0"	kg lb											*11 050 *25,200	*11 050 *25,200	5930 18'3"
10 500 mm 35'0"	kg lb			*12 550 *27,650	*12 550 *27,650	*11 100 *22,350	*11 100 *22,350					*9300 *20,800	*9300 *20,800	7950 25'5"
9000 mm 30'0"	kg lb			*12 000 *26,600	*12 000 *26,600	*12 300 *26,850	*12 300 *26,850	*10 100 *19,450	9350 *19,450			*8550 *18,900	*8550 *18,900	9290 30'1"
7500 mm 25'0"	kg lb			*12 350 *27,100	*12 350 *27,100	*12 950 *28,300	12 550 27,000	*12 250 *26,350	9300 20,000			*8150 *18,000	7400 16,500	10 250 33'4"
6000 mm 20'0"	kg lb	*15 400 *32,450	*15 400 *32,450	*15 300 *32,900	*15 300 *32,900	*14 450 *31,300	12 150 26,150	*12 500 *27,150	9100 19,600	*10 600 *20,950	7050 15,100	*8000 *17,650	6600 14,550	10 910 35'7"
4500 mm 15'0"	kg lb			*18 900 *40,750	16 050 34,700	*15 200 *32,900	11 600 25,000	*12 850 *27,850	8800 18,950	10 850 23,250	6900 14,850	*8050 *17,750	6100 13,450	11 330 37'1"
3000 mm 10'0"	kg lb			*20 150 *43,550	15 000 32,400	*15 850 *34,300	11 000 23,750	*13 100 *28,400	8500 18,250	10 650 22,900	6750 14,500	*8300 *18,200	5800 12,800	11 540 37'9"
1500 mm 5'0"	kg lb			*20 450 *44,350	14 250 30,700	*16 050 *34,800	10 550 22,700	13 100 28,200	8200 17,650	10 450 22,500	6600 14,150	*8700 *19,100	5750 12,600	11 540 37'10"
0 mm 0'0"	kg lb			*19 600 *42,500	13 800 29,750	*15 650 *33,850	10 200 22,000	*12 700 *27,450	8000 17,200	*10 350 *22,150	6450 13,900	*8800 *19,350	5800 12,800	11 350 37'2"
-1500 mm -5'0"	kg lb	*14 400 *33,200	*14 400 *33,200	*17 650 *38,350	13 700 29,500	*14 400 *31,150	10 050 21,700	*11 700 *25,150	7900 17,000	*9100 *19,200	6450 13,900	*8050 *17,700	6100 13,500	10 950 35'10"
-3000 mm -10'0"	kg lb			*14 800 *32,000	13 800 29,700	*12 300 *26,500	10 100 21,750	*9800 *20,850	7900 17,100			*7000 *15,350	6700 14,800	10 320 33'8"



ISO 10567:2007



\* Indicates that the load is limited by hydraulic lifting capacity rather than tipping load. The above loads are in compliance with hydraulic excavator lift capacity standard ISO 10567:2007. They do not exceed 87% of hydraulic lifting capacity or 75% of tipping load. Weight of all lifting accessories must be deducted from the above lifting capacities. Lifting capacities are based on the machine standing on a firm, uniform supporting surface. The use of a work tool attachment point to handle/lift objects, could affect the machine lift performance.

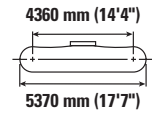
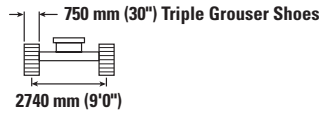
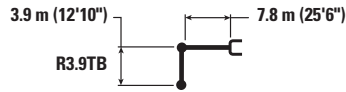
Lift capacity stays with ±5% for all available track shoes.

Always refer to the appropriate Operation and Maintenance Manual for specific product information.

# 352 Straight Boom Hydraulic Excavator Specifications

## Straight Boom Lift Capacities – Counterweight: 12.0 mt (26,460 lb) – without Bucket, Heavy Lift: On

Fixed Gauge Undercarriage



		4500 mm/15'0"		6000 mm/20'0"		7500 mm/25'0"		9000 mm/30'0"		10 500 mm/35'0"		mm ft/in		
		kg lb	kg lb	kg lb	kg lb	kg lb	kg lb	kg lb	kg lb	kg lb	kg lb	kg lb	mm ft/in	
12 000 mm 40'0"	kg lb											*11 050 *25,200	*11 050 *25,200	5930 18'3"
10 500 mm 35'0"	kg lb			*12 550 *27,650	*12 550 *27,650	*11 100 *22,350	*11 100 *22,350					*9300 *20,800	*9300 *20,800	7950 25'5"
9000 mm 30'0"	kg lb			*12 000 *26,600	*12 000 *26,600	*12 300 *26,850	*12 300 *26,850	*10 100 *19,450	9450 *19,450			*8550 *18,900	*8550 *18,900	9290 30'1"
7500 mm 25'0"	kg lb			*12 350 *27,100	*12 350 *27,100	*12 950 *28,300	12 700 27,300	*12 250 *26,350	9450 20,250			*8150 *18,000	7500 16,700	10 250 33'4"
6000 mm 20'0"	kg lb	*15 400 *32,450	*15 400 *32,450	*15 300 *32,900	*15 300 *32,900	*14 450 *31,300	12 250 26,450	*12 500 *27,150	9200 19,850	*10 600 *20,950	7150 15,300	*8000 *17,650	6650 14,750	10 910 35'7"
4500 mm 15'0"	kg lb			*18 900 *40,750	16 250 35,100	*15 200 *32,900	11 700 25,250	*12 850 *27,850	8900 19,200	11 000 *23,600	7000 15,050	*8050 *17,750	6150 13,600	11 330 37'1"
3000 mm 10'0"	kg lb			*20 150 *43,550	15 200 32,800	*15 850 *34,300	11 150 24,050	*13 100 *28,400	8600 18,500	10 800 *23,200	6850 14,700	*8300 *18,200	5900 13,000	11 540 37'9"
1500 mm 5'0"	kg lb			*20 450 *44,350	14 400 31,100	*16 050 *34,800	10 650 23,000	*13 150 *28,400	8300 17,900	10 600 *22,850	6650 14,350	*8700 *19,100	5800 12,800	11 540 37'10"
0 mm 0'0"	kg lb			*19 600 *42,500	14 000 30,150	*15 650 *33,850	10 350 22,300	*12 700 *27,450	8100 17,450	*10 350 *22,150	6550 14,100	*8800 *19,350	5900 13,000	11 350 37'2"
-1500 mm -5'0"	kg lb	*14 400 *33,200	*14 400 *33,200	*17 650 *38,350	13 900 29,900	*14 400 *31,150	10 200 22,000	*11 700 *25,150	8000 17,250	*9100 *19,200	6550 14,100	*8050 *17,700	6200 13,650	10 950 35'10"
-3000 mm -10'0"	kg lb			*14 800 *32,000	13 950 30,100	*12 300 *26,500	10 250 22,050	*9800 *20,850	8050 17,300			*7000 *15,350	6800 15,000	10 320 33'8"



ISO 10567:2007



\* Indicates that the load is limited by hydraulic lifting capacity rather than tipping load. The above loads are in compliance with hydraulic excavator lift capacity standard ISO 10567:2007. They do not exceed 87% of hydraulic lifting capacity or 75% of tipping load. Weight of all lifting accessories must be deducted from the above lifting capacities. Lifting capacities are based on the machine standing on a firm, uniform supporting surface. The use of a work tool attachment point to handle/lift objects, could affect the machine lift performance.

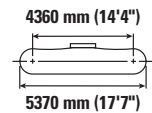
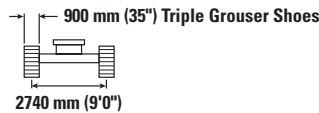
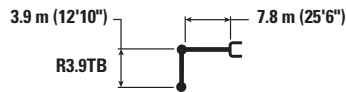
Lift capacity stays with ±5% for all available track shoes.

Always refer to the appropriate Operation and Maintenance Manual for specific product information.

# 352 Straight Boom Hydraulic Excavator Specifications

## Straight Boom Lift Capacities – Counterweight: 12.0 mt (26,460 lb) – without Bucket, Heavy Lift: On

Fixed Gauge Undercarriage



		4500 mm/15'0"		6000 mm/20'0"		7500 mm/25'0"		9000 mm/30'0"		10 500 mm/35'0"		mm ft/in		
12 000 mm 40'0"	kg lb											*11 050 *25,200	*11 050 *25,200	5930 18'3"
10 500 mm 35'0"	kg lb			*12 550 *27,650	*12 550 *27,650	*11 100 *22,350	*11 100 *22,350					*9300 *20,800	*9300 *20,800	7950 25'5"
9000 mm 30'0"	kg lb			*12 000 *26,600	*12 000 *26,600	*12 300 *26,850	*12 300 *26,850	*10 100 *19,450	9550 *19,450			*8550 *18,900	*8550 *18,900	9290 30'1"
7500 mm 25'0"	kg lb			*12 350 *27,100	*12 350 *27,100	*12 950 *28,300	12 850 27,600	*12 250 *26,350	9550 20,450			*8150 *18,000	7600 16,900	10 250 33'4"
6000 mm 20'0"	kg lb	*15 400 *32,450	*15 400 *32,450	*15 300 *32,900	*15 300 *32,900	*14 450 *31,300	12 400 26,750	*12 500 *27,150	9350 20,050	*10 600 *20,950	7250 15,500	*8000 *17,650	6750 14,950	10 910 35'7"
4500 mm 15'0"	kg lb			*18 900 *40,750	16 450 35,500	*15 200 *32,900	11 850 25,550	*12 850 *27,850	9050 19,450	*11 100 *23,900	7100 15,250	*8050 *17,750	6250 13,800	11 330 37'1"
3000 mm 10'0"	kg lb			*20 150 *43,550	15 400 33,200	*15 850 *34,300	11 300 24,350	*13 100 *28,400	8700 18,750	10 950 23,500	6950 14,900	*8300 *18,200	6000 13,150	11 540 37'9"
1500 mm 5'0"	kg lb			*20 450 *44,350	14 600 31,500	*16 050 *34,800	10 800 23,300	*13 150 *28,400	8400 18,100	10 750 23,150	6750 14,550	*8700 *19,100	5900 12,950	11 540 37'10"
0 mm 0'0"	kg lb			*19 600 *42,500	14 200 30,550	*15 650 *33,850	10 500 22,600	*12 700 *27,450	8200 17,650	*10 350 *22,150	6650 14,300	*8800 *19,350	6000 13,200	11 350 37'2"
-1500 mm -5'0"	kg lb	*14 400 *33,200	*14 400 *33,200	*17 650 *38,350	14 050 30,300	*14 400 *31,150	10 350 22,300	*11 700 *25,150	8100 17,450	*9100 *19,200	6600 14,300	*8050 *17,700	6300 13,850	10 950 35'10"
-3000 mm -10'0"	kg lb			*14 800 *32,000	14 150 30,450	*12 300 *26,500	10 350 22,350	*9800 *20,850	8150 17,550			*7000 *15,350	6900 15,200	10 320 33'8"



ISO 10567:2007



\* Indicates that the load is limited by hydraulic lifting capacity rather than tipping load. The above loads are in compliance with hydraulic excavator lift capacity standard ISO 10567:2007. They do not exceed 87% of hydraulic lifting capacity or 75% of tipping load. Weight of all lifting accessories must be deducted from the above lifting capacities. Lifting capacities are based on the machine standing on a firm, uniform supporting surface. The use of a work tool attachment point to handle/lift objects, could affect the machine lift performance.

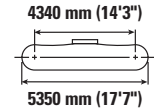
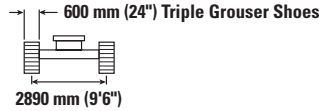
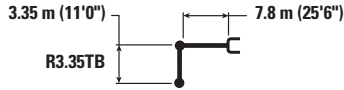
Lift capacity stays with ±5% for all available track shoes.

Always refer to the appropriate Operation and Maintenance Manual for specific product information.

# 352 Straight Boom Hydraulic Excavator Specifications

## Straight Boom Lift Capacities – Counterweight: 12.0 mt (26,460 lb) – without Bucket, Heavy Lift: On

Variable Gauge Undercarriage



		4500 mm/15'0"		6000 mm/20'0"		7500 mm/25'0"		9000 mm/30'0"		10 500 mm/35'0"		mm ft/in		
12 000 mm 40'0"	kg lb	<b>*33,650</b>	<b>*33,650</b>									<b>*13 350</b> <b>*30,700</b>	<b>*13 350</b> <b>*30,700</b>	5270 16'0"
10 500 mm 35'0"	kg lb			<b>*14 500</b> <b>*31,800</b>	<b>*14 500</b> <b>*31,800</b>							<b>*10 800</b> <b>*24,200</b>	<b>*10 800</b> <b>*24,200</b>	7440 23'9"
9000 mm 30'0"	kg lb			<b>*14 100</b> <b>*31,150</b>	<b>*14 100</b> <b>*31,150</b>	<b>*14 150</b> <b>*30,700</b>	13 650 29,300					<b>*9750</b> <b>*21,650</b>	<b>*9750</b> <b>*21,650</b>	8840 28'7"
7500 mm 25'0"	kg lb	<b>*13 500</b> <b>*29,500</b>	<b>*13 500</b> <b>*29,500</b>	<b>*14 900</b> <b>*32,550</b>	<b>*14 900</b> <b>*32,550</b>	<b>*14 400</b> <b>*31,350</b>	13 450 28,950	<b>*12 700</b> <b>*27,700</b>	10 050 21,550			<b>*9250</b> <b>*20,400</b>	8650 19,250	9810 31'11"
6000 mm 20'0"	kg lb	<b>*23 900</b> <b>*51,350</b>	<b>*23 900</b> <b>*51,350</b>	<b>*18 250</b> <b>*39,400</b>	<b>*18 250</b> <b>*39,400</b>	<b>*15 000</b> <b>*32,550</b>	13 050 28,100	<b>*12 900</b> <b>*28,000</b>	9850 21,200			<b>*9050</b> <b>*19,950</b>	7700 17,050	10 480 34'2"
4500 mm 15'0"	kg lb			<b>*19 700</b> <b>*42,550</b>	17 250 37,250	<b>*15 700</b> <b>*34,000</b>	12 500 27,000	<b>*13 150</b> <b>*28,550</b>	9600 20,650	11 200 24,050	7550 16,250	<b>*9050</b> <b>*19,950</b>	7150 15,750	10 890 35'8"
3000 mm 10'0"	kg lb			<b>*20 600</b> <b>*44,600</b>	16 250 35,150	<b>*16 150</b> <b>*35,000</b>	12 000 25,850	<b>*13 300</b> <b>*28,800</b>	9300 20,050	11 050 23,750	7450 16,000	<b>*9300</b> <b>*20,450</b>	6850 15,100	11 090 36'4"
1500 mm 5'0"	kg lb			<b>*20 350</b> <b>*44,100</b>	15 650 33,750	<b>*16 100</b> <b>*34,900</b>	11 600 25,000	<b>*13 150</b> <b>*28,400</b>	9050 19,500	<b>*10 750</b> <b>*23,050</b>	7300 15,750	<b>*9650</b> <b>*21,250</b>	6800 14,950	11 080 36'4"
0 mm 0'0"	kg lb			<b>*18 850</b> <b>*41,000</b>	15 400 33,200	<b>*15 300</b> <b>*33,200</b>	11 350 24,450	<b>*12 450</b> <b>*26,850</b>	8900 19,150	<b>*9800</b> <b>*20,800</b>	7250 15,650	<b>*8950</b> <b>*19,700</b>	6950 15,300	10 860 35'7"
-1500 mm -5'0"	kg lb	<b>*14 000</b> <b>*32,400</b>	<b>*14 000</b> <b>*32,400</b>	<b>*16 450</b> <b>*35,750</b>	15 400 33,200	<b>*13 700</b> <b>*29,650</b>	11 300 24,350	<b>*11 050</b> <b>*23,700</b>	8850 19,100			<b>*8000</b> <b>*17,600</b>	7400 16,250	10 420 34'1"
-3000 mm -10'0"	kg lb			<b>*13 100</b> <b>*28,350</b>	<b>*13 100</b> <b>*28,350</b>	<b>*11 100</b> <b>*23,850</b>	<b>*11 100</b> <b>*23,850</b>	<b>*8550</b> <b>*17,850</b>	<b>*8550</b> <b>*17,850</b>			<b>*7650</b> <b>*17,000</b>	<b>*7650</b> <b>*17,000</b>	9390 30'6"



ISO 10567:2007



\* Indicates that the load is limited by hydraulic lifting capacity rather than tipping load. The above loads are in compliance with hydraulic excavator lift capacity standard ISO 10567:2007. They do not exceed 87% of hydraulic lifting capacity or 75% of tipping load. Weight of all lifting accessories must be deducted from the above lifting capacities. Lifting capacities are based on the machine standing on a firm, uniform supporting surface. The use of a work tool attachment point to handle/lift objects, could affect the machine lift performance.

Lift capacity stays with ±5% for all available track shoes.

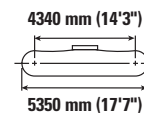
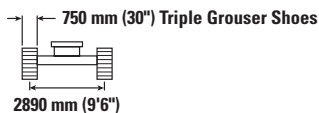
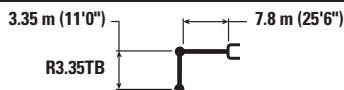
Always refer to the appropriate Operation and Maintenance Manual for specific product information.



# 352 Straight Boom Hydraulic Excavator Specifications

## Straight Boom Lift Capacities – Counterweight: 12.0 mt (26,460 lb) – without Bucket, Heavy Lift: On

Variable Gauge Undercarriage



		4500 mm/15'0"		6000 mm/20'0"		7500 mm/25'0"		9000 mm/30'0"		10 500 mm/35'0"		mm ft/in		
12 000 mm 40'0"	kg lb	<b>*33,650</b>	<b>*33,650</b>									<b>*13 350</b> <b>*30,700</b>	<b>*13 350</b> <b>*30,700</b>	5270 16'0"
10 500 mm 35'0"	kg lb			<b>*14 500</b> <b>*31,800</b>	<b>*14 500</b> <b>*31,800</b>							<b>*10 800</b> <b>*24,200</b>	<b>*10 800</b> <b>*24,200</b>	7440 23'9"
9000 mm 30'0"	kg lb			<b>*14 100</b> <b>*31,150</b>	<b>*14 100</b> <b>*31,150</b>	<b>*14 150</b> <b>*30,700</b>	13 800 29,650					<b>*9750</b> <b>*21,650</b>	<b>*9750</b> <b>*21,650</b>	8840 28'7"
7500 mm 25'0"	kg lb	<b>*13 500</b> <b>*29,500</b>	<b>*13 500</b> <b>*29,500</b>	<b>*14 900</b> <b>*32,550</b>	<b>*14 900</b> <b>*32,550</b>	<b>*14 400</b> <b>*31,350</b>	13 600 29,300	<b>*12 700</b> <b>*27,700</b>	10 150 21,800			<b>*9250</b> <b>*20,400</b>	8750 19,500	9810 31'11"
6000 mm 20'0"	kg lb	<b>*23 900</b> <b>*51,350</b>	<b>*23 900</b> <b>*51,350</b>	<b>*18 250</b> <b>*39,400</b>	<b>*18 250</b> <b>*39,400</b>	<b>*15 000</b> <b>*32,550</b>	13 200 28,450	<b>*12 900</b> <b>*28,000</b>	10 000 21,450			<b>*9050</b> <b>*19,950</b>	7800 17,250	10 480 34'2"
4500 mm 15'0"	kg lb			<b>*19 700</b> <b>*42,550</b>	17 450 37,650	<b>*15 700</b> <b>*34,000</b>	12 650 27,300	<b>*13 150</b> <b>*28,550</b>	9700 20,900	<b>*11 250</b> <b>*24,350</b>	7650 16,450	<b>*9050</b> <b>*19,950</b>	7250 15,950	10 890 35'8"
3000 mm 10'0"	kg lb			<b>*20 600</b> <b>*44,600</b>	16 450 35,550	<b>*16 150</b> <b>*35,000</b>	12 150 26,200	<b>*13 300</b> <b>*28,800</b>	9400 20,300	<b>*11 150</b> <b>*24,000</b>	7550 16,200	<b>*9300</b> <b>*20,450</b>	6950 15,300	11 090 36'4"
1500 mm 5'0"	kg lb			<b>*20 350</b> <b>*44,100</b>	15 850 34,200	<b>*16 100</b> <b>*34,900</b>	11 750 25,300	<b>*13 150</b> <b>*28,400</b>	9150 19,750	<b>*10 750</b> <b>*23,050</b>	7400 15,950	<b>*9650</b> <b>*21,250</b>	6900 15,150	11 080 36'4"
0 mm 0'0"	kg lb			<b>*18 850</b> <b>*41,000</b>	15 600 33,600	<b>*15 300</b> <b>*33,200</b>	11 500 24,800	<b>*12 450</b> <b>*26,850</b>	9000 19,400	<b>*9800</b> <b>*20,800</b>	7350 15,850	<b>*8950</b> <b>*19,700</b>	7050 15,500	10 860 35'7"
-1500 mm -5'0"	kg lb	<b>*14 000</b> <b>*32,400</b>	<b>*14 000</b> <b>*32,400</b>	<b>*16 450</b> <b>*35,750</b>	15 600 33,600	<b>*13 700</b> <b>*29,650</b>	11 450 24,650	<b>*11 050</b> <b>*23,700</b>	8950 19,350			<b>*8000</b> <b>*17,600</b>	7500 16,500	10 420 34'1"
-3000 mm -10'0"	kg lb			<b>*13 100</b> <b>*28,350</b>	<b>*13 100</b> <b>*28,350</b>	<b>*11 100</b> <b>*23,850</b>	<b>*11 100</b> <b>*23,850</b>	<b>*8550</b> <b>*17,850</b>	<b>*8550</b> <b>*17,850</b>			<b>*7650</b> <b>*17,000</b>	<b>*7650</b> <b>*17,000</b>	9390 30'6"



ISO 10567:2007



\* Indicates that the load is limited by hydraulic lifting capacity rather than tipping load. The above loads are in compliance with hydraulic excavator lift capacity standard ISO 10567:2007. They do not exceed 87% of hydraulic lifting capacity or 75% of tipping load. Weight of all lifting accessories must be deducted from the above lifting capacities. Lifting capacities are based on the machine standing on a firm, uniform supporting surface. The use of a work tool attachment point to handle/lift objects, could affect the machine lift performance.

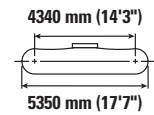
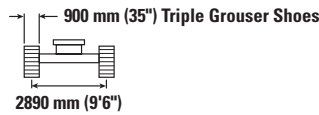
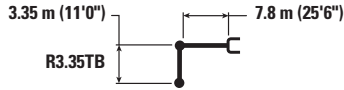
Lift capacity stays with ±5% for all available track shoes.

Always refer to the appropriate Operation and Maintenance Manual for specific product information.

# 352 Straight Boom Hydraulic Excavator Specifications

## Straight Boom Lift Capacities – Counterweight: 12.0 mt (26,460 lb) – without Bucket, Heavy Lift: On

Variable Gauge Undercarriage



		4500 mm/15'0"		6000 mm/20'0"		7500 mm/25'0"		9000 mm/30'0"		10 500 mm/35'0"		mm ft/in		
12 000 mm 40'0"	kg lb	*33,650	*33,650									*13 350 *30,700	*13 350 *30,700	5270 16'0"
10 500 mm 35'0"	kg lb			*14 500 *31,800	*14 500 *31,800							*10 800 *24,200	*10 800 *24,200	7440 23'9"
9000 mm 30'0"	kg lb			*14 100 *31,150	*14 100 *31,150	*14 150 *30,700	13 950 29,950					*9750 *21,650	*9750 *21,650	8840 28'7"
7500 mm 25'0"	kg lb	*13 500 *29,500	*13 500 *29,500	*14 900 *32,550	*14 900 *32,550	*14 400 *31,350	13 750 29,600	*12 700 *27,700	10 300 22,050			*9250 *20,400	8850 19,700	9810 31'11"
6000 mm 20'0"	kg lb	*23 900 *51,350	*23 900 *51,350	*18 250 *39,400	*18 250 *39,400	*15 000 *32,550	13 350 28,750	*12 900 *28,000	10 100 21,700			*9050 *19,950	7900 17,450	10 480 34'2"
4500 mm 15'0"	kg lb			*19 700 *42,550	17 650 38,100	*15 700 *34,000	12 800 27,650	*13 150 *28,550	9800 21,150	*11 250 *24,350	7750 16,700	*9050 *19,950	7300 16,150	10 890 35'8"
3000 mm 10'0"	kg lb			*20 600 *44,600	16 650 36,000	*16 150 *35,000	12 300 26,500	*13 300 *28,800	9550 20,550	*11 150 *24,000	7650 16,400	*9300 *20,450	7050 15,500	11 090 36'4"
1500 mm 5'0"	kg lb			*20 350 *44,100	16 050 34,600	*16 100 *34,900	11 900 25,600	*13 150 *28,400	9300 20,000	*10 750 *23,050	7500 16,150	*9650 *21,250	6950 15,350	11 080 36'4"
0 mm 0'0"	kg lb			*18 850 *41,000	15 800 34,050	*15 300 *33,200	11 650 25,100	*12 450 *26,850	9150 19,700	*9800 *20,800	7450 16,050	*8950 *19,700	7150 15,700	10 860 35'7"
-1500 mm -5'0"	kg lb	*14 000 *32,400	*14 000 *32,400	*16 450 *35,750	15 800 34,050	*13 700 *29,650	11 600 24,950	*11 050 *23,700	9100 19,600			*8000 *17,600	7600 16,700	10 420 34'1"
-3000 mm -10'0"	kg lb			*13 100 *28,350	*13 100 *28,350	*11 100 *23,850	*11 100 *23,850	*8550 *17,850	*8550 *17,850			*7650 *17,000	*7650 *17,000	9390 30'6"



ISO 10567:2007



\* Indicates that the load is limited by hydraulic lifting capacity rather than tipping load. The above loads are in compliance with hydraulic excavator lift capacity standard ISO 10567:2007. They do not exceed 87% of hydraulic lifting capacity or 75% of tipping load. Weight of all lifting accessories must be deducted from the above lifting capacities. Lifting capacities are based on the machine standing on a firm, uniform supporting surface. The use of a work tool attachment point to handle/lift objects, could affect the machine lift performance.

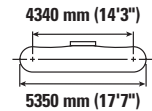
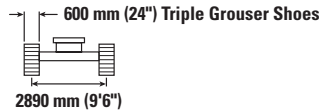
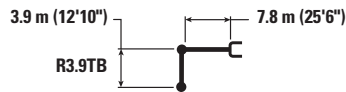
Lift capacity stays with ±5% for all available track shoes.

Always refer to the appropriate Operation and Maintenance Manual for specific product information.

# 352 Straight Boom Hydraulic Excavator Specifications

## Straight Boom Lift Capacities – Counterweight: 12.0 mt (26,460 lb) – without Bucket, Heavy Lift: On

Variable Gauge Undercarriage



		4500 mm/15'0"		6000 mm/20'0"		7500 mm/25'0"		9000 mm/30'0"		10 500 mm/35'0"		mm ft/in		
12 000 mm 40'0"	kg lb			*11 550	*11 550							*10 800 *24,550	*10 800 *24,550	6180 19'2"
10 500 mm 35'0"	kg lb			*12 500 *27,600	*12 500 *27,600	*11 400 *23,550	*11 400 *23,550					*9200 *20,550	*9200 *20,550	8110 26'0"
9000 mm 30'0"	kg lb			*12 000 *26,550	*12 000 *26,550	*12 350 *27,000	*12 350 *27,000	*10 450 *20,850	10 200 *20,850			*8500 *18,800	*8500 *18,800	9410 30'6"
7500 mm 25'0"	kg lb			*12 450 *27,350	*12 450 *27,350	*13 050 *28,550	*13 050 *28,550	*12 250 *26,700	10 150 21,850			*8150 *17,950	8000 17,850	10 320 33'7"
6000 mm 20'0"	kg lb	*16 800 *34,900	*16 800 *34,900	*15 950 *34,150	*15 950 *34,150	*14 500 *31,450	13 200 28,450	*12 550 *27,200	9950 21,400	*10 850 *21,700	7750 16,600	*8000 *17,650	7200 15,900	10 960 35'9"
4500 mm 15'0"	kg lb			*19 050 *41,100	17 500 37,800	*15 300 *33,100	12 650 27,250	*12 900 *27,900	9650 20,750	*11 100 *24,100	7600 16,300	*8100 *17,750	6700 14,750	11 360 37'2"
3000 mm 10'0"	kg lb			*20 250 *43,750	16 450 35,500	*15 900 *34,400	12 050 26,000	*13 150 *28,450	9300 20,050	11 050 23,750	7400 15,950	*8300 *18,300	6400 14,150	11 550 37'10"
1500 mm 5'0"	kg lb			*20 400 *44,250	15 700 33,850	*16 050 *34,750	11 600 25,000	*13 100 *28,350	9000 19,450	10 850 23,350	7250 15,650	*8750 *19,200	6350 13,950	11 530 37'10"
0 mm 0'0"	kg lb			*19 450 *42,200	15 300 33,000	*15 550 *33,650	11 300 24,300	*12 650 *27,300	8800 19,000	*10 250 *21,950	7150 15,400	*8700 *19,200	6500 14,250	11 320 37'1"
-1500 mm -5'0"	kg lb	*15 050 *34,650	*15 050 *34,650	*17 400 *37,800	15 200 32,750	*14 250 *30,800	11 150 24,050	*11 550 *24,800	8750 18,800	*8900 *18,750	7150 15,400	*8000 *17,500	6850 15,050	10 900 35'8"
-3000 mm -10'0"	kg lb			*14 450 *31,250	*14 450 *31,250	*12 050 *25,900	11 200 24,150	*9550 *20,250	8800 18,950			*6850 *15,050	*6850 *15,050	10 240 33'5"



ISO 10567:2007



\* Indicates that the load is limited by hydraulic lifting capacity rather than tipping load. The above loads are in compliance with hydraulic excavator lift capacity standard ISO 10567:2007. They do not exceed 87% of hydraulic lifting capacity or 75% of tipping load. Weight of all lifting accessories must be deducted from the above lifting capacities. Lifting capacities are based on the machine standing on a firm, uniform supporting surface. The use of a work tool attachment point to handle/lift objects, could affect the machine lift performance.

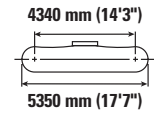
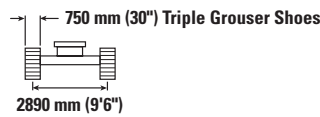
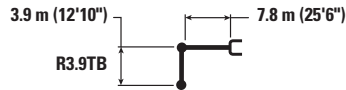
Lift capacity stays with ±5% for all available track shoes.

Always refer to the appropriate Operation and Maintenance Manual for specific product information.

# 352 Straight Boom Hydraulic Excavator Specifications

## Straight Boom Lift Capacities – Counterweight: 12.0 mt (26,460 lb) – without Bucket, Heavy Lift: On

Variable Gauge Undercarriage



		4500 mm/15'0"		6000 mm/20'0"		7500 mm/25'0"		9000 mm/30'0"		10 500 mm/35'0"		mm ft/in		
12 000 mm 40'0"	kg lb			*11 550	*11 550							*10 800 *24,550	*10 800 *24,550	6180 19'2"
10 500 mm 35'0"	kg lb			*12 500 *27,600	*12 500 *27,600	*11 400 *23,550	*11 400 *23,550					*9200 *20,550	*9200 *20,550	8110 26'0"
9000 mm 30'0"	kg lb			*12 000 *26,550	*12 000 *26,550	*12 350 *27,000	*12 350 *27,000	*10 450 *20,850	10 350 *20,850			*8500 *18,800	*8500 *18,800	9410 30'6"
7500 mm 25'0"	kg lb			*12 450 *27,350	*12 450 *27,350	*13 050 *28,550	*13 050 *28,550	*12 250 *26,700	10 300 22,100			*8150 *17,950	8100 *17,950	10 320 33'7"
6000 mm 20'0"	kg lb	*16 800 *34,900	*16 800 *34,900	*15 950 *34,150	*15 950 *34,150	*14 500 *31,450	13 350 28,750	*12 550 *27,200	10 050 21,650	*10 850 *21,700	7850 16,800	*8000 *17,650	7250 16,100	10 960 35'9"
4500 mm 15'0"	kg lb			*19 050 *41,100	17 700 38,250	*15 300 *33,100	12 800 27,550	*12 900 *27,900	9750 21,000	*11 100 *24,100	7700 16,550	*8100 *17,750	6750 14,950	11 360 37'2"
3000 mm 10'0"	kg lb			*20 250 *43,750	16 650 35,950	*15 900 *34,400	12 200 26,300	*13 150 *28,450	9450 20,300	*11 100 *24,000	7500 16,150	*8300 *18,300	6500 14,350	11 550 37'10"
1500 mm 5'0"	kg lb			*20 400 *44,250	15 900 34,250	*16 050 *34,750	11 750 25,300	*13 100 *28,350	9150 19,700	*10 850 *23,450	7350 15,850	*8750 *19,200	6450 14,150	11 530 37'10"
0 mm 0'0"	kg lb			*19 450 *42,200	15 500 33,400	*15 550 *33,650	11 450 24,650	*12 650 *27,300	8950 19,250	*10 250 *21,950	7250 15,600	*8700 *19,200	6550 14,450	11 320 37'1"
-1500 mm -5'0"	kg lb	*15 050 *34,650	*15 050 *34,650	*17 400 *37,800	15 400 33,200	*14 250 *30,800	11 300 24,350	*11 550 *24,800	8850 19,050	*8900 *18,750	7250 15,600	*8000 *17,500	6900 15,250	10 900 35'8"
-3000 mm -10'0"	kg lb			*14 450 *31,250	*14 450 *31,250	*12 050 *25,900	11 350 24,450	*9550 *20,250	8900 19,200			*6850 *15,050	*6850 *15,050	10 240 33'5"



ISO 10567:2007



\* Indicates that the load is limited by hydraulic lifting capacity rather than tipping load. The above loads are in compliance with hydraulic excavator lift capacity standard ISO 10567:2007. They do not exceed 87% of hydraulic lifting capacity or 75% of tipping load. Weight of all lifting accessories must be deducted from the above lifting capacities. Lifting capacities are based on the machine standing on a firm, uniform supporting surface. The use of a work tool attachment point to handle/lift objects, could affect the machine lift performance.

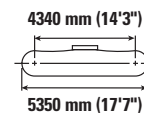
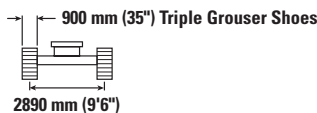
Lift capacity stays with ±5% for all available track shoes.

Always refer to the appropriate Operation and Maintenance Manual for specific product information.

# 352 Straight Boom Hydraulic Excavator Specifications

## Straight Boom Lift Capacities – Counterweight: 12.0 mt (26,460 lb) – without Bucket, Heavy Lift: On

Variable Gauge Undercarriage



		4500 mm/15'0"		6000 mm/20'0"		7500 mm/25'0"		9000 mm/30'0"		10 500 mm/35'0"		mm ft/in		
		kg lb	kg lb	kg lb	kg lb	kg lb	kg lb	kg lb	kg lb	kg lb	kg lb	kg lb	kg lb	mm ft/in
12 000 mm 40'0"	kg lb			*11 550	*11 550							*10 800 *24,550	*10 800 *24,550	6180 19'2"
10 500 mm 35'0"	kg lb			*12 500 *27,600	*12 500 *27,600	*11 400 *23,550	*11 400 *23,550					*9200 *20,550	*9200 *20,550	8110 26'0"
9000 mm 30'0"	kg lb			*12 000 *26,550	*12 000 *26,550	*12 350 *27,000	*12 350 *27,000	*10 450 *20,850	10 450 *20,850			*8500 *18,800	*8500 *18,800	9410 30'6"
7500 mm 25'0"	kg lb			*12 450 *27,350	*12 450 *27,350	*13 050 *28,550	*13 050 *28,550	*12 250 *26,700	10 400 22,350			*8150 *17,950	*8150 *17,950	10 320 33'7"
6000 mm 20'0"	kg lb	*16 800 *34,900	*16 800 *34,900	*15 950 *34,150	*15 950 *34,150	*14 500 *31,450	13 500 29,050	*12 550 *27,200	10 200 21,900	*10 850 *21,700	7950 17,000	*8000 *17,650	7350 16,300	10 960 35'9"
4500 mm 15'0"	kg lb			*19 050 *41,100	17 900 38,650	*15 300 *33,100	12 950 27,900	*12 900 *27,900	9850 21,250	*11 100 *24,100	7800 16,750	*8100 *17,750	6850 15,150	11 360 37'2"
3000 mm 10'0"	kg lb			*20 250 *43,750	16 850 36,350	*15 900 *34,400	12 350 26,650	*13 150 *28,450	9550 20,550	*11 100 *24,000	7600 16,400	*8300 *18,300	6600 14,500	11 550 37'10"
1500 mm 5'0"	kg lb			*20 400 *44,250	16 100 34,700	*16 050 *34,750	11 900 25,600	*13 100 *28,350	9250 19,950	*10 850 *23,450	7450 16,050	*8750 *19,200	6550 14,350	11 530 37'10"
0 mm 0'0"	kg lb			*19 450 *42,200	15 700 33,850	*15 550 *33,650	11 600 24,950	*12 650 *27,300	9050 19,500	*10 250 *21,950	7350 15,850	*8700 *19,200	6650 14,650	11 320 37'1"
-1500 mm -5'0"	kg lb	*15 050 *34,650	*15 050 *34,650	*17 400 *37,800	15 600 33,600	*14 250 *30,800	11 450 24,650	*11 550 *24,800	8950 19,350	*8900 *18,750	7350 15,850	*8000 *17,500	7000 15,450	10 900 35'8"
-3000 mm -10'0"	kg lb			*14 450 *31,250	*14 450 *31,250	*12 050 *25,900	11 500 24,750	*9550 *20,250	9000 19,450			*6850 *15,050	*6850 *15,050	10 240 33'5"



ISO 10567:2007



\* Indicates that the load is limited by hydraulic lifting capacity rather than tipping load. The above loads are in compliance with hydraulic excavator lift capacity standard ISO 10567:2007. They do not exceed 87% of hydraulic lifting capacity or 75% of tipping load. Weight of all lifting accessories must be deducted from the above lifting capacities. Lifting capacities are based on the machine standing on a firm, uniform supporting surface. The use of a work tool attachment point to handle/lift objects, could affect the machine lift performance.

Lift capacity stays with ±5% for all available track shoes.

Always refer to the appropriate Operation and Maintenance Manual for specific product information.

# 352 Straight Boom Hydraulic Excavator Specifications

## Bucket Specifications and Compatibility – Europe

	Linkage	Width		Capacity		Weight		Fill %	Variable Gauge Undercarriage	
		mm	in	m <sup>3</sup>	yd <sup>3</sup>	kg	lb		12.0 mt (26,460 lb) and 11.35 mt (25,020 lb) with Removable Counterweight	
									7.8 m (25'6") Straight Boom	
									R3.35 (11'0")	R3.9 (12'10")
<b>Pin-On (No Quick Coupler)</b>										
Heavy Duty	TB	1650	66	2.41	3.15	2220	4,894	100	⊙	⊙
Severe Duty Spade	TB	1700	67	2.50	3.27	2409	5,311	90	⊙	⊙
Heavy Duty	TB	1850	72	2.69	3.52	2349	5,179	100	⊖	⊖
	TB	1900	74	2.78	3.64	2427	5,351	100	⊖	○
Severe Duty Spade	TB	1350	54	1.87	2.44	2053	4,526	90	●	●
Severe Duty	TB	1550	61	2.14	2.80	2327	5,130	90	●	●
	TB	1700	67	2.41	3.16	2479	5,465	90	●	⊙
Severe Duty Spade	TB	1650	66	2.41	3.15	2367	5,218	90	●	⊙
	TB	1900	75	2.78	3.64	2723	6,003	90	⊖	⊖
Extreme Duty	TB	1700	67	2.41	3.16	2722	6,001	90	⊙	⊖
Extreme Duty Spade	TB	1950	77	2.78	3.64	2974	6,557	90	⊖	○
Maximum load with pin-on (payload + bucket)								kg	6850	6360
								lb	15,102	14,021
<b>With Pin Grabber Coupler</b>										
Heavy Duty	TB	1650	66	2.41	3.15	2220	4,894	100	⊖	○
Severe Duty Spade	TB	1700	67	2.50	3.27	2409	5,311	90	⊖	○
Heavy Duty	TB	1850	72	2.69	3.52	2349	5,179	100	○	◇
	TB	1900	74	2.78	3.64	2427	5,351	100	○	◇
Severe Duty Spade	TB	1350	54	1.87	2.44	2053	4,526	90	●	⊙
Severe Duty	TB	1550	61	2.14	2.80	2327	5,130	90	⊙	⊖
	TB	1700	67	2.41	3.16	2479	5,465	90	⊖	○
Severe Duty Spade	TB	1650	66	2.41	3.15	2367	5,218	90	⊖	○
	TB	1900	75	2.78	3.64	2723	6,003	90	○	◇
Extreme Duty	TB	1700	67	2.41	3.16	2722	6,001	90	○	○
Extreme Duty Spade	TB	1950	77	2.78	3.64	2974	6,557	90	◇	◇
Maximum load with coupler (payload + bucket)								kg	5797	5307
								lb	12,780	11,699

The above loads are in compliance with hydraulic excavator standard EN474-5:2006 + A3:2013, they do not exceed 87% of hydraulic lifting capacity or 75% of tipping capacity with front linkage fully extended at ground line with bucket curled.

Capacity based on ISO 7451:2007.

### Maximum Material Density:

- 2100 kg/m<sup>3</sup> (3,500 lb/yd<sup>3</sup>)
- ⊙ 1800 kg/m<sup>3</sup> (3,000 lb/yd<sup>3</sup>)
- ⊖ 1500 kg/m<sup>3</sup> (2,500 lb/yd<sup>3</sup>)
- 1200 kg/m<sup>3</sup> (2,000 lb/yd<sup>3</sup>)
- ◇ 900 kg/m<sup>3</sup> (1,500 lb/yd<sup>3</sup>)

Caterpillar recommends using appropriate work tools to maximize the value customers receive from our products. Use of work tools, including buckets, which are outside of Caterpillar's recommendations or specifications for weight, dimensions, flows, pressures, etc. may result in less-than-optimal performance, including but not limited to reductions in production, stability, reliability, and component durability. Improper use of a work tool resulting in sweeping, prying, twisting and/or catching of heavy loads will reduce the life of the boom and stick.

# 352 Straight Boom Hydraulic Excavator Specifications

## Bucket Specifications and Compatibility – North America

	Linkage	Width		Capacity		Weight		Fill %	Fixed Gauge Undercarriage 12.0 mt (26,460 lb) and 11.35 mt (25,020 lb) with Removable Counterweight	
		mm	in	m <sup>3</sup>	yd <sup>3</sup>	kg	lb		7.8 m (25'6") Straight Boom	
									R3.35 (11'0")	R3.9 (12'10")
<b>Pin-On (No Quick Coupler)</b>										
General Duty	TB	2050	81	3.30	4.32	2465	5,434	100	◇	◇
General Duty – High Capacity	TB	2050	80	3.82	5.00	2552	5,626	100	◇	X
Severe Duty	TB	1300	51	1.75	2.29	1925	4,244	90	●	●
Heavy Duty	TB	1500	59	2.05	2.68	2068	4,559	100	⊙	⊙
	TB	1650	65	2.30	3.01	2232	4,921	100	⊖	⊖
	TB	1800	71	2.60	3.40	2385	5,258	100	⊖	○
	TB	1950	77	2.90	3.79	2534	5,586	100	○	◇
	TB	1950	77	2.90	3.79	2534	5,586	100	○	◇
Severe Duty	TB	1900	75	3.09	4.05	2866	6,318	90	○	◇
	TB	1950	77	2.90	3.79	2817	6,210	90	○	◇
Heavy Duty	TB	1350	53	1.87	2.45	1980	4,365	100	●	⊙
	TB	1800	71	2.69	3.52	2438	5,375	100	○	○
Severe Duty	TB	1550	61	2.14	2.80	2370	5,224	90	⊙	⊖
Heavy Duty	TB	1200	48	1.60	2.09	1853	4,085	100	●	●
	TB	1650	66	2.41	3.15	2308	5,088	100	⊖	○
	TB	1800	72	2.69	3.52	2438	5,375	100	○	○
Maximum load with pin-on (payload + bucket)								kg	6110	5660
								lb	13,470	12,478
<b>With Pin Grabber Coupler</b>										
General Duty	TB	2050	81	3.30	4.32	2465	5,434	100	X	X
General Duty – High Capacity	TB	2050	80	3.82	5.00	2552	5,626	100	X	X
Severe Duty	TB	1300	51	1.75	2.29	1925	4,244	90	⊙	⊖
Heavy Duty	TB	1500	59	2.05	2.68	2068	4,559	100	⊖	○
	TB	1650	65	2.30	3.01	2232	4,921	100	○	◇
	TB	1800	71	2.60	3.40	2385	5,258	100	◇	X
	TB	1950	77	2.90	3.79	2534	5,586	100	◇	X
	TB	1950	77	2.90	3.79	2534	5,586	100	◇	X
Severe Duty	TB	1900	75	3.09	4.05	2866	6,318	90	X	X
	TB	1950	77	2.90	3.79	2817	6,210	90	◇	X
Heavy Duty	TB	1350	53	1.87	2.45	1980	4,365	100	⊖	○
	TB	1800	71	2.69	3.52	2438	5,375	100	◇	X
Severe Duty	TB	1550	61	2.14	2.80	2370	5,224	90	○	○
Heavy Duty	TB	1200	48	1.60	2.09	1853	4,085	100	●	⊙
	TB	1650	66	2.41	3.15	2308	5,088	100	○	◇
	TB	1800	72	2.69	3.52	2438	5,375	100	◇	X
Maximum load with coupler (payload + bucket)								kg	5057	4607
								lb	11,148	10,156

The above loads are in compliance with hydraulic excavator standard EN474-5:2006 + A3:2013, they do not exceed 87% of hydraulic lifting capacity or 75% of tipping capacity with front linkage fully extended at ground line with bucket curled.

Capacity based on ISO 7451:2007.

### Maximum Material Density:

- 2100 kg/m<sup>3</sup> (3,500 lb/yd<sup>3</sup>)
- ⊙ 1800 kg/m<sup>3</sup> (3,000 lb/yd<sup>3</sup>)
- ⊖ 1500 kg/m<sup>3</sup> (2,500 lb/yd<sup>3</sup>)
- 1200 kg/m<sup>3</sup> (2,000 lb/yd<sup>3</sup>)
- ◇ 900 kg/m<sup>3</sup> (1,500 lb/yd<sup>3</sup>)
- X Not Recommended

Caterpillar recommends using appropriate work tools to maximize the value customers receive from our products. Use of work tools, including buckets, which are outside of Caterpillar's recommendations or specifications for weight, dimensions, flows, pressures, etc. may result in less-than-optimal performance, including but not limited to reductions in production, stability, reliability, and component durability. Improper use of a work tool resulting in sweeping, prying, twisting and/or catching of heavy loads will reduce the life of the boom and stick.

(continued on next page)

# 352 Straight Boom Hydraulic Excavator Specifications

## Bucket Specifications and Compatibility – North America (continued)

	Linkage	Width		Capacity		Weight		Fill	Variable Gauge Undercarriage		
		mm	in	m <sup>3</sup>	yd <sup>3</sup>	kg	lb		%	12.0 mt (26,460 lb) and 11.35 mt (25,020 lb) with Removable Counterweight	
										7.8 m (25'6") Straight Boom	
									R3.35 (11'0")	R3.9 (12'10")	
<b>Pin-On (No Quick Coupler)</b>											
General Duty	TB	2050	81	3.30	4.32	2465	5,434	100	○	○	
General Duty – High Capacity	TB	2050	80	3.82	5.00	2552	5,626	100	◇	◇	
Severe Duty	TB	1300	51	1.75	2.29	1925	4,244	90	●	●	
Heavy Duty	TB	1500	59	2.05	2.68	2068	4,559	100	●	●	
	TB	1650	65	2.30	3.01	2232	4,921	100	●	⊙	
	TB	1800	71	2.60	3.40	2385	5,258	100	⊙	⊖	
	TB	1950	77	2.90	3.79	2534	5,586	100	⊖	○	
	TB	1950	77	2.90	3.79	2534	5,586	100	⊖	○	
Severe Duty	TB	1900	75	3.09	4.05	2866	6,318	90	⊖	○	
	TB	1950	77	2.90	3.79	2817	6,210	90	⊖	○	
Heavy Duty	TB	1350	53	1.87	2.45	1980	4,365	100	●	●	
	TB	1800	71	2.69	3.52	2438	5,375	100	⊖	⊖	
Severe Duty	TB	1550	61	2.14	2.80	2370	5,224	90	●	●	
Heavy Duty	TB	1200	48	1.60	2.09	1853	4,085	100	●	●	
	TB	1650	66	2.41	3.15	2308	5,088	100	⊙	⊖	
	TB	1800	72	2.69	3.52	2438	5,375	100	⊖	⊖	
Maximum load with pin-on (payload + bucket)								kg	6850	6360	
								lb	15,102	14,021	
<b>With Pin Grabber Coupler</b>											
General Duty	TB	2050	81	3.30	4.32	2465	5,434	100	◇	◇	
General Duty – High Capacity	TB	2050	80	3.82	5.00	2552	5,626	100	X	X	
Severe Duty	TB	1300	51	1.75	2.29	1925	4,244	90	●	●	
Heavy Duty	TB	1500	59	2.05	2.68	2068	4,559	100	⊙	⊖	
	TB	1650	65	2.30	3.01	2232	4,921	100	⊖	○	
	TB	1800	71	2.60	3.40	2385	5,258	100	○	◇	
	TB	1950	77	2.90	3.79	2534	5,586	100	◇	◇	
	TB	1950	77	2.90	3.79	2534	5,586	100	◇	◇	
Severe Duty	TB	1900	75	3.09	4.05	2866	6,318	90	◇	◇	
	TB	1950	77	2.90	3.79	2817	6,210	90	○	◇	
Heavy Duty	TB	1350	53	1.87	2.45	1980	4,365	100	●	⊙	
	TB	1800	71	2.69	3.52	2438	5,375	100	○	◇	
Severe Duty	TB	1550	61	2.14	2.80	2370	5,224	90	⊙	⊖	
Heavy Duty	TB	1200	48	1.60	2.09	1853	4,085	100	●	●	
	TB	1650	66	2.41	3.15	2308	5,088	100	⊖	○	
	TB	1800	72	2.69	3.52	2438	5,375	100	○	◇	
Maximum load with coupler (payload + bucket)								kg	5797	5307	
								lb	12,780	11,699	

The above loads are in compliance with hydraulic excavator standard EN474-5:2006 + A3:2013, they do not exceed 87% of hydraulic lifting capacity or 75% of tipping capacity with front linkage fully extended at ground line with bucket curled.

Capacity based on ISO 7451:2007.

### Maximum Material Density:

- 2100 kg/m<sup>3</sup> (3,500 lb/yd<sup>3</sup>)
- ⊙ 1800 kg/m<sup>3</sup> (3,000 lb/yd<sup>3</sup>)
- ⊖ 1500 kg/m<sup>3</sup> (2,500 lb/yd<sup>3</sup>)
- 1200 kg/m<sup>3</sup> (2,000 lb/yd<sup>3</sup>)
- ◇ 900 kg/m<sup>3</sup> (1,500 lb/yd<sup>3</sup>)
- X Not Recommended

Caterpillar recommends using appropriate work tools to maximize the value customers receive from our products. Use of work tools, including buckets, which are outside of Caterpillar's recommendations or specifications for weight, dimensions, flows, pressures, etc. may result in less-than-optimal performance, including but not limited to reductions in production, stability, reliability, and component durability. Improper use of a work tool resulting in sweeping, prying, twisting and/or catching of heavy loads will reduce the life of the boom and stick.



# 352 Straight Boom Hydraulic Excavator Specifications

## Attachments Offering Guide – Europe

Not all Attachments are available in all regions. Consult your Cat dealer for configurations available in your region.

Match    
  \* Working range front only    
  No Match    
  1800 kg/m<sup>3</sup> (3,000 lb/yd<sup>3</sup>)    
  1200 kg/m<sup>3</sup> (2,000 lb/yd<sup>3</sup>)

### PIN-ON ATTACHMENTS

Undercarriage		Variable Gauge	
Counterweight		12.0 mt (26,460 lb)	
Boom Type		Straight	
Stick Length		R3.35 (11'0")	R3.9 (12'10")
Hydraulic Hammers	H160 S	✓	✓
	H180 GC S	✓	✓
	H180 S	✓	✓
	H190 S	✓	✓
Multi-Processors	MP345 Concrete Cutter Jaw	✓	✓
	MP345 Demolition Jaw	✓	✓
	MP345 Pulverizer Jaw	✓	✓
	MP345 Shear Jaw	✓	✓
	MP345 Concrete Cutter Jaw-Flat Top	✓	✓
	MP345 Demolition Jaw-Flat Top	✓	✓
	MP345 Pulverizer Jaw-Flat Top	✓	✓
	MP345 Shear Jaw-Flat Top	✓	✓
	MP365 Concrete Cutter Jaw	✓*	
MP365 Shear Jaw	✓*		
Demolition and Sorting Grapples	G345	✓	✓
Mobile Scrap and Demolition Shears	S3050 Flat Top	✓	✓
Pulverizers	P345 Primary Pulverizer	✓	✓
	P345 Primary Pulverizer-Flat Top	✓	✓
Orange Peel Grapples	GSH455-1000	●	●
	GSH455-1500	●	●
	GSH455-2000	●	●
	GSH555-1000	●	●
	GSH555-1500	●	●
	GSM-50-1000	●	●
	GSM-50-1250	●	●
	GSM-50-1500	●	●
	GSM-50-2000	○	○
	GSM-60-1250	●	○
	GSM-60-1500	○	○
Clamshell Grapples	CTV30-1700	●	●
	CTV30-1900	●	●
	CTV30-2300	●	○
	CTV30-2700	○	○
	CTV30-2900	○	○
	CTV30-3100	○	

(continued on next page)

# 352 Straight Boom Hydraulic Excavator Specifications

## Attachments Offering Guide – Europe (continued)

Not all Attachments are available in all regions. Consult your Cat dealer for configurations available in your region.

Match       \* Working range front only       No Match

### CAT PIN GRABBER COUPLER ATTACHMENTS

Undercarriage		Variable Gauge	
Counterweight		12.0 mt (26,460 lb)	
Boom Type		Straight	
Stick Length		R3.35 (11'0")	R3.9 (12'10")
Hydraulic Hammers	H160 S	✓	✓
	H180 GC S	✓	✓
	H180 S	✓	✓
	H190 S	✓*	
Multi-Processors	MP345 Concrete Cutter Jaw	✓	✓
	MP345 Demolition Jaw	✓	✓*
	MP345 Pulverizer Jaw	✓	✓*
	MP345 Shear Jaw	✓	✓
	MP345 Concrete Cutter Jaw-Flat Top	✓	✓*
	MP345 Demolition Jaw-Flat Top	✓*	
	MP345 Pulverizer Jaw-Flat Top	✓*	
Demolition and Sorting Grapples	G345	✓	✓
	Pulverizers	P345 Primary Pulverizer	✓*

### CW-55 DEDICATED COUPLER ATTACHMENTS

Undercarriage		Variable Gauge	
Counterweight		12.0 mt (26,460 lb)	
Boom Type		Straight	
Stick Length		R3.35 (11'0")	R3.9 (12'10")
Hydraulic Hammers	H160 S	✓	✓
	H180 GC S	✓	✓
	H180 S	✓	✓
	H190 S	✓	
Multi-Processors	MP345 Concrete Cutter Jaw	✓	✓
	MP345 Demolition Jaw	✓	✓*
	MP345 Pulverizer Jaw	✓	✓*
	MP345 Shear Jaw	✓	✓
	MP345 Concrete Cutter Jaw-Flat Top	✓	✓*
	MP345 Demolition Jaw-Flat Top	✓*	
	MP345 Pulverizer Jaw-Flat Top	✓*	
Demolition and Sorting Grapples	G345	✓	✓
	Pulverizers	P345 Primary Pulverizer	✓*

### BOOM-MOUNT ATTACHMENTS

Undercarriage		Variable Gauge	
Counterweight		12.0 mt (26,460 lb)	
Boom Type		Straight	
Mobile Scrap and Demolition Shears	S2090	✓	
	S3070 Flat Top	✓	
	S3090 Flat Top	✓	

# 352 Straight Boom Hydraulic Excavator Specifications

## Attachments Offering Guide – North America

Not all Attachments are available in all regions. Consult your Cat dealer for configurations available in your region.

Match    
  \* Working range front only    
  No Match    
  1800 kg/m<sup>3</sup> (3,000 lb/yd<sup>3</sup>)    
  1200 kg/m<sup>3</sup> (2,000 lb/yd<sup>3</sup>)

### PIN-ON ATTACHMENTS

Undercarriage		Fixed Gauge		Variable Gauge	
		12.0 mt (26,460 lb)		12.0 mt (26,460 lb)	
Counterweight		Straight		Straight	
Boom Type		R3.35 (11'0")		R3.9 (12'10")	
Stick Length		R3.35 (11'0")		R3.9 (12'10")	
Hydraulic Hammers	H160 S	✓	✓	✓	✓
	H180 GC S	✓	✓	✓	✓
	H180 S	✓	✓	✓	✓
	H190 S	✓	✓*	✓	✓
Multi-Processors	MP345 Concrete Cutter Jaw	✓	✓	✓	✓
	MP345 Demolition Jaw	✓	✓	✓	✓
	MP345 Pulverizer Jaw	✓	✓	✓	✓
	MP345 Shear Jaw	✓	✓	✓	✓
	MP345 Concrete Cutter Jaw-Flat Top	✓	✓	✓	✓
	MP345 Demolition Jaw-Flat Top	✓	✓*	✓	✓
	MP345 Pulverizer Jaw-Flat Top	✓	✓*	✓	✓
	MP345 Shear Jaw-Flat Top	✓	✓	✓	✓
	MP365 Concrete Cutter Jaw			✓*	
MP365 Shear Jaw			✓*		
Demolition and Sorting Grapples	G345	✓	✓	✓	✓
Mobile Scrap and Demolition Shears	S3050 Flat Top	✓	✓*	✓	✓
Pulverizers	P345 Primary Pulverizer	✓	✓*	✓	✓
	P345 Primary Pulverizer-Flat Top	✓*		✓	✓
Orange Peel Grapples	GSH455-1000	●	●	●	●
	GSH455-1500	●	●	●	●
	GSH455-2000	○	○	●	●
	GSH555-1000	●	●	●	●
	GSH555-1500	●	○	●	●
Clamshell Grapples	CTV30-1900	●	○	●	●
	CTV30-2300	○	○	○	○
	CTV30-2500	○		○	○
	CTV30-2700			○	○

(continued on next page)

# 352 Straight Boom Hydraulic Excavator Specifications

## Attachments Offering Guide – North America (continued)

Not all Attachments are available in all regions. Consult your Cat dealer for configurations available in your region.

Match       \* Working range front only       No Match

### CAT PIN GRABBER COUPLER ATTACHMENTS

Undercarriage		Fixed Gauge		Variable Gauge	
Counterweight		12.0 mt (26,460 lb)		12.0 mt (26,460 lb)	
Boom Type		Straight		Straight	
Stick Length		R3.35 (11'0")	R3.9 (12'10")	R3.35 (11'0")	R3.9 (12'10")
Hydraulic Hammers	H160 S	✓	✓	✓	✓
	H180 GC S	✓	✓	✓	✓
	H180 S	✓	✓*	✓	✓
	H190 S			✓*	
Multi-Processors	MP345 Concrete Cutter Jaw	✓*		✓	✓
	MP345 Demolition Jaw			✓	✓*
	MP345 Pulverizer Jaw			✓	✓*
	MP345 Shear Jaw	✓*		✓	✓
	MP345 Concrete Cutter Jaw-Flat Top			✓	✓*
	MP345 Demolition Jaw-Flat Top			✓*	
	MP345 Pulverizer Jaw-Flat Top			✓*	
	MP345 Shear Jaw-Flat Top			✓	✓*
Demolition and Sorting Grapples	G345	✓	✓	✓	✓
Pulverizers	P345 Primary Pulverizer			✓*	

### BOOM-MOUNT ATTACHMENTS

Undercarriage		Fixed Gauge		Variable Gauge	
Counterweight		12.0 mt (26,460 lb)		12.0 mt (26,460 lb)	
Boom Type		Straight		Straight	
Mobile Scrap and Demolition Shears	S2090	✓		✓	
	S3070 Flat Top	✓		✓	
	S3090 Flat Top	✓		✓	

# 352 Straight Boom Standard and Optional Equipment

## Standard and Optional Equipment

Standard and optional equipment may vary. Consult your Cat dealer for details.

	Standard	Optional		Standard	Optional
<b>BOOM, STICKS AND LINKAGES</b>			<b>CAT TECHNOLOGY</b>		
7.8 m (25'6") Straight boom	✓		Cat Equipment Management:		
3.35 m (11'0") Reach stick		✓	– VisionLink®	✓ <sup>5</sup>	
3.9 m (12'10") Reach stick		✓	– VisionLink Productivity		✓ <sup>6</sup>
TB family bucket linkage		✓	– Remote Flash	✓	
<b>CAB</b>			– Remote Troubleshoot	✓	
High-resolution 254 mm (10") LCD touchscreen monitor	✓		– Work tool recognition and tracking (PL161)	✓	
Operator Protective Guards	✓		Cat Grade:		
Auto bi-level air conditioner	✓		– Cat Grade with 2D	✓	
Jog dial and shortcut keys for monitor control	✓		Cat Assist:		
Keyless push-to-start engine control	✓		– Lift Assist	✓	
Height-adjustable console	✓		Cat Payload:		
Tilt-up left-side console	✓		– On-the-go weighing	✓	
Heated air-suspension seat	✓		– Semiautomatic calibration	✓	
51 mm (2") seat belt	✓		– Payload/cycle information	✓	
Monitor integrated Bluetooth® radio with USB/Auxiliary ports <sup>1</sup>	✓		– VisionLink Productivity back office reporting		✓ <sup>6</sup>
Monitor integrated Bluetooth radio with USB/Auxiliary ports/DAB <sup>2</sup>	✓		Cat Advanced Payload:		
12V DC outlets	✓		– Daily totals		✓
Document storage	✓		– Custom lists		✓
Overhead storage and rear storage with nets	✓		– Smart weight target		✓
Cup holder	✓		– E-ticket Integration		✓ <sup>6</sup>
Openable two-piece front window	✓		<b>ELECTRICAL SYSTEM</b>		
Rear window emergency exit	✓		Maintenance-free 1,000 CCA batteries (×4)	✓	
Radial wiper with washer	✓		Centralized electrical disconnect switch	✓	
Openable polycarbonate skylight hatch	✓		LED exterior chassis and boom lights	✓	
LED dome light	✓		Premium surround working lights	✓	
Floor welcome light	✓		<b>ENGINE</b>		
Roof sunscreen	✓		115 amp alternator	✓	
Roller front sunscreen	✓		Three selectable modes: Power, Smart, Eco	✓	
Roller rear sunscreen	✓		Auto engine speed control	✓	
Washable floor mat	✓		52° C (126° F) high-ambient cooling	✓	
Beacon ready	✓		Hydraulic reverse fan	✓	
Cat Stick Steer	✓		–18° C (0° F) cold start capability	✓	
Auxiliary relay	✓		–32° C (–25° F) cold start capability		✓
			Double element air filter with integrated pre-cleaner	✓	
			Dual stage four micron main filter	✓	
			Inlet air heater	✓	
			Engine oil sensor		✓
			10 micron primary filter with water separator	✓	
			Electric fuel priming pump	✓	
			Secure start with PIN code	✓	
			Remote disable	✓	

<sup>1</sup>North America only

<sup>2</sup>Europe only

<sup>3</sup>Optional in Europe

<sup>4</sup>Optional in North America

<sup>5</sup>Provides core telematics data to manage health, maintenance insights, and condition monitoring. Other plans available for more comprehensive data reporting. Consult your Cat dealer for details.

<sup>6</sup>VisionLink subscription required. Consult your Cat dealer for details.

(continued on next page)

# 352 Straight Boom Standard and Optional Equipment

## Standard and Optional Equipment (continued)

Standard and optional equipment may vary. Consult your Cat dealer for details.

	Standard	Optional		Standard	Optional
<b>HYDRAULIC SYSTEM</b>			<b>SERVICE AND MAINTENANCE</b>		
Boom and stick regeneration circuit	✓		Integrated vehicle health management system	✓	
Electronic main control valve	✓		Grouped engine oil and fuel filters	✓	
Auto dig boost	✓		Scheduled Oil Sampling (S·O·S <sup>SM</sup> ) ports	✓	
Auto heavy lift	✓		QuickEvac <sup>TM</sup> maintenance ready	✓	
Auto hydraulic oil warmup	✓		Electric refueling pump with auto shutoff <sup>2</sup>	✓	
Bio hydraulic oil capability	✓		<b>UNDERCARRIAGE AND STRUCTURES</b>		
Hydraulic efficiency monitoring		✓	Fixed gauge undercarriage		✓ <sup>1</sup>
Fine swing capability	✓		Variable gauge undercarriage	✓ <sup>4</sup>	
Auto swing parking brake	✓		Towing eye on base frame	✓	
High performance hydraulic return filter	✓		Full-length track guiding guards	✓	
Two speed travel	✓		HD bottom guard	✓	
Combined two-way auxiliary circuit	✓		HD travel motor guards	✓	
Medium-pressure auxiliary circuit	✓		Bucket cylinder guard	✓	
Quick coupler circuit for Cat Pin Grabber	✓ <sup>1</sup>		Grease lubricated track	✓	
Quick coupler circuit for CW dedicated	✓ <sup>2</sup>		11.35 mt (25,020 lb) removable counterweight		✓
<b>SAFETY AND SECURITY</b>			12.0 mt (26,460 lb) counterweight		✓
2D E-Fence:	✓		600 mm (24") triple grouser track shoes		✓
– E-ceiling			750 mm (30") triple grouser track shoes		✓
– E-floor			900 mm (35") triple grouser track shoes		✓
– E-swing					
– E-wall					
– E-cab avoidance					
Auto hammer stop	✓				
Caterpillar One Key security system	✓				
Lockable external tool/storage box	✓				
Lockable door, fuel, and hydraulic tank locks	✓				
Lockable fuel drain compartment	✓				
Service platform with anti-skid plate and recessed bolts	✓				
Right Hand (RH) handrail and handhold	✓				
Signaling/warning horn	✓				
Travel alarm	✓ <sup>3</sup>				
Swing alarm		✓			
Bluetooth receiver	✓				
Ground-level secondary engine shutoff switch	✓				
Lockable disconnect switch	✓				
Boom lowering check valve capability	✓				
Stick lowering check valve capability	✓				
Rear and right-hand-sideview cameras	✓				
360° visibility		✓			
Inspection lighting		✓			

<sup>1</sup>North America only

<sup>2</sup>Europe only

<sup>3</sup>Optional in Europe

<sup>4</sup>Optional in North America

<sup>5</sup>Provides core telematics data to manage health, maintenance insights, and condition monitoring. Other plans available for more comprehensive data reporting. Consult your Cat dealer for details.

<sup>6</sup>VisionLink subscription required. Consult your Cat dealer for details.

# 352 Straight Boom Dealer Installed Kits and Attachments

## Dealer Installed Kits and Attachments

Attachments may vary. Consult your Cat dealer for details.

- |  |  |   |
|--|--|---|
| <b>CAB</b> <ul style="list-style-type: none"><li>• Left Hand (LH) electrical pedal for tool control</li><li>• Horizontal slider joysticks</li><li>• Duct ready for advanced cabin filtration</li></ul> | <b>SAFETY AND SECURITY</b> <ul style="list-style-type: none"><li>• Bluetooth key fob</li><li>• 75 mm (3") retractable seat belt</li><li>• Remote Control system line-of-sight (LOS) or non-line-of-sight (NLOS)</li><li>• Cat Detect – People Detection</li><li>• Cat Command – Remote control kit</li></ul> | <b>PERFORMANCE AND PRODUCTIVITY</b> <ul style="list-style-type: none"><li>• Delayed engine shutdown kit</li></ul><br><b>GUARD</b> <ul style="list-style-type: none"><li>• Bucket cylinder guard</li></ul> |
|--|--|---|

# 352 Straight Boom Environmental Declaration

The following information applies to the machine at the time of final manufacture as configured for sale in the regions covered in this document. The content of this declaration is valid as of the date issued; however, content related to machine features and specifications are subject to change without notice. For additional information, please see the machine's Operation and Maintenance Manual.

For more information on sustainability in action and our progress, please visit <https://www.caterpillar.com/en/company/sustainability>.

## Engine

- The Cat® C13B engine meets U.S. EPA Tier 4 Final and EU Stage V emission standards.
- Cat diesel engines are required to use ULSD (ultra-low sulfur diesel fuel with 15 ppm of sulfur or less) or ULSD blended with the following lower-carbon intensity fuels\*\* up to:
  - ✓ 20% biodiesel FAME (fatty acid methyl ester)\*
  - ✓ 100% renewable diesel, HVO (hydrotreated vegetable oil) and GTL (gas-to-liquid) fuels

Refer to guidelines for successful application. Please consult your Cat dealer or “Caterpillar Machine Fluids Recommendations” (SEBU6250) for details.

*\*Engines with no aftertreatment devices can use higher blends, up to 100% biodiesel (for use of blends higher than 20% biodiesel, consult your Cat dealer).*

*\*\*Tailpipe greenhouse gas emissions from lower-carbon intensity fuels are essentially the same as traditional fuels.*

## Air Conditioning System

- The air conditioning system on this machine contains the fluorinated greenhouse gas refrigerant R134a (Global Warming Potential = 1430). The system contains 1.0 kg (2.2 lb) of refrigerant which has a CO<sub>2</sub> equivalent of 1.430 metric tonnes (1.576 tons).

## Paint

- Based on best available knowledge, the maximum allowable concentration, measured in parts per million (PPM), of the following heavy metals in paint are:
  - Barium < 0.01%
  - Cadmium < 0.01%
  - Chromium < 0.01%
  - Lead < 0.01%

## Sound Performance

ISO 6395:2008 (external) – 108 dB(A)

ISO 6396:2008 (inside cab) – 73 dB(A)

- Hearing protection may be needed when operating with an open operator station and cab (when not properly maintained or doors/windows open) for extended periods or in a noisy environment.

## Oils and Fluids

- Caterpillar factory fills with ethylene glycol coolants. Cat Diesel Engine Antifreeze/Coolant (DEAC) and Cat Extended Life Coolant (ELC) can be recycled. Consult your Cat dealer for more information.
- Cat Bio HYDO™ Advanced is an EU Ecolabel approved biodegradable hydraulic oil.
- Additional fluids are likely to be present, please consult the Operations and Maintenance Manual or the Application and Installation guide for complete fluid recommendations and maintenance intervals.

## Features and Technology

- The following features and technology may contribute to fuel savings and/or carbon reduction. Features may vary. Consult your Cat dealer for details.
  - Smart mode matches machine power to digging requirements automatically
  - Eco mode helps minimize fuel consumption for light applications
  - Increase operating efficiency with standard Cat technologies that help lower operator fatigue and operating costs.
  - Hydraulic reversing fan cools engine on demand to help reduce fuel consumption
  - Extended service intervals help decrease maintenance costs

## Recycling

- The materials included in machines are categorized as below with approximate weight percentage. Because of variations of product configurations, the following values in the table may vary.

Material Type	Weight Percentage
Steel	83.09%
Iron	8.97%
Nonferrous Metal	1.66%
Mixed Metal	0.04%
Mixed-Metal and Nonmetal	0.72%
Plastic	0.62%
Rubber	0.16%
Mixed Nonmetallic	0.13%
Fluid	2.97%
Other	1.64%
Uncategorized	0.00%
Total	100%

- A machine with higher recyclability rate will ensure more efficient usage of valuable natural resources and enhance End-of-Life value of the product. According to ISO 16714:2008 (Earthmoving machinery – Recyclability and recoverability – Terminology and calculation method), recyclability rate is defined as percentage by mass (mass fraction in percent) of the new machine potentially able to be recycled, reused, or both.

All parts in the bill of material are first evaluated by component type based on a list of components defined by the ISO 16714:2008 and Japan CEMA (Construction Equipment Manufacturers Association) standards. Remaining parts are further evaluated for recyclability based on material type.

Because of variations of product configurations, the following value in the table may vary.

Recyclability – 98%



For more complete information on Cat products, dealer services, and industry solutions, visit us on the web at [www.cat.com](http://www.cat.com)

© 2024 Caterpillar  
All rights reserved

Materials and specifications are subject to change without notice. Featured machines in photos may include additional equipment. See your Cat dealer for available options.

CAT, CATERPILLAR, LET'S DO THE WORK, their respective logos, "Caterpillar Corporate Yellow," the "Power Edge" and Cat "Modern Hex" trade dress as well as corporate and product identity used herein, are trademarks of Caterpillar and may not be used without permission. VisionLink is a trademark of Caterpillar Inc., registered in the United States and in other countries.

AEXQ4049-00 (11-2024)  
Build Number: 08D  
(Europe, N Am)

